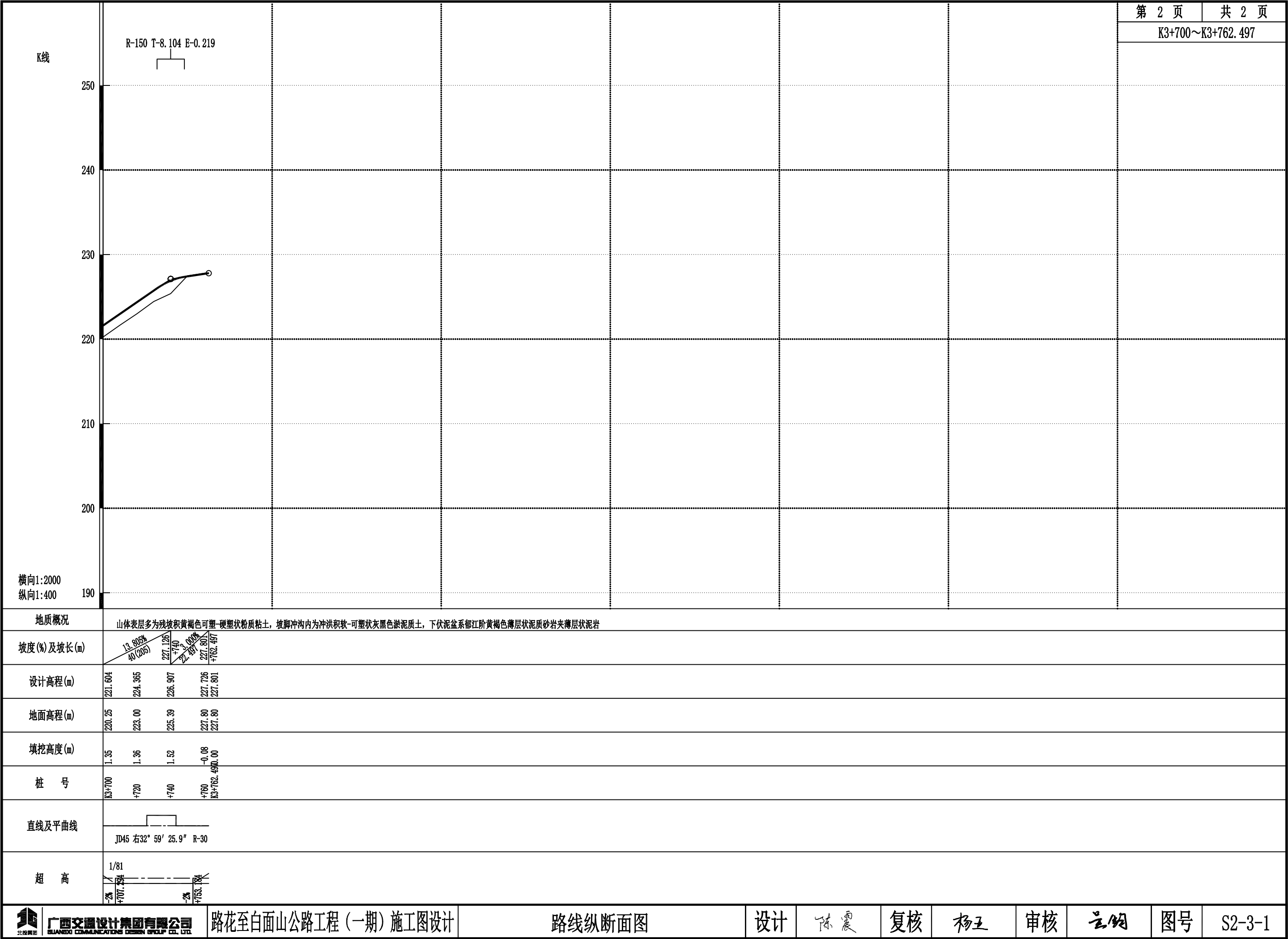


交点要素表

交点编号	交点桩号	X	Y	半径	长度	A1	A2	T1	T2	E	ZH(ZY)	HY(ZY)	QZ	YH(YZ)	HZ(YZ)	转角
JD40	K3+566.911	2711524.338	561189.533	60.000	33.394			17.142	17.142	2.401			K3+566.466	K3+583.163		左31° 53' 18.8"
JD41	K3+595.975	2711532.911	561218.233	70.000	25.343			12.812	12.812	1.163		K3+583.163	K3+595.835	K3+608.506		右20° 44' 37.0"
JD42	K3+631.891	2711530.315	561254.337	20.000	14.790			7.752	7.752	1.450		K3+624.140	K3+631.534	K3+638.929		右42° 22' 12.7"
JD43	K3+654.156	2711513.651	561270.159	25.000	27.353			15.227	15.227	4.272		K3+638.929	K3+652.606	K3+666.282		左62° 41' 16.5"
JD44	K3+688.628	2711524.137	561306.238	80.000	14.153			7.095	7.095	0.314		K3+681.533	K3+688.609	K3+695.686		右10° 08' 10.9"
JD45	K3+734.727	2711529.014	561352.116	30.000	17.274			8.884	8.884	1.288		K3+725.844	K3+734.481	K3+743.118		右32° 59' 25.9"
KZD	K3+762.497	2711516.217	561377.316													



直线、曲线及转角表

路花至白面山公路工程(一期)施工图设计

第 1 页共 1 页

交点 编号	桩号	交点坐标		转角值	曲线要素值								曲线要素桩号					直线 长度 (m)	交点 间距 (m)	方位角	测量断链桩号 及断链长度	备注	
		X(m)	Y(m)		圆曲线 半径	第一缓和 曲线长度	第二缓和 曲线长度	第一缓和 曲线A值	第二缓和 曲线A值	切线长 T1	切线长 T2	曲线度 长	外距	ZH	ZY(HY)	OZ	YZ(YH)						HZ
1	2	3	4	5	6	7	8	9	10	11	12	13	14	15	16	17	18	19	20	21	22	23	24
JD28	K2+917.428	2711979.886	561004.162																18.811			起点K3+000	
JD29	K3+041.605	2711875.810	560930.296	左31°49'24.0"	90.000	30.000		51.962		39.972	26.446	64.988	3.805	K3+001.633	K3+031.633	K3+049.127				127.625	215°21'53.2"		
JD30	K3+083.356	2711832.711	560927.628	左12°43'54.7"	150.000					16.735	16.735	33.332	0.931			K3+083.287				43.181	183°32'29.3"		
JD31	K3+113.440	2711802.878	560932.455	左48°24'46.6"	30.000					13.487	13.487	25.349	2.892			K3+112.627	K3+125.302		30.693	30.221	170°48'34.6"		
JD32	K3+177.466	2711767.704	560987.888	右110°07'23.8"	15.000					21.471	21.471	28.830	11.192		K3+155.994	K3+170.410	K3+184.825			65.650	122°23'48.0"		
JD33	K3+227.470	2711728.690	560937.007	左70°48'25.7"	60.000					42.645	42.645	74.149	13.611		K3+184.825	K3+221.899	K3+258.974		27.513	64.117	232°31'11.7"		
JD34	K3+305.303	2711644.208	560964.925	左64°11'37.0"	30.000					18.817	18.817	33.612	5.413		K3+286.486	K3+303.292	K3+320.098		29.385	88.975	161°42'46.1"		
JD35	K3+360.417	2711636.470	561023.552	右57°19'52.7"	20.000					10.934	10.934	20.012	2.794		K3+349.483	K3+359.489	K3+369.495		20.316	59.135	97°31'09.1"		
JD36	K3+396.586	2711602.050	561039.712	左37°25'37.2"	20.000					6.775	6.775	13.064	1.116		K3+389.811	K3+396.343	K3+402.875		29.746	38.025	154°51'01.7"		
JD37	K3+440.208	2711581.735	561078.864	右19°08'26.5"	45.000					7.587	7.587	15.033	0.635		K3+432.621	K3+440.138	K3+447.654		5.561	44.108	117°25'24.5"		
JD38	K3+469.022	2711560.710	561098.771	左17°57'52.1"	100.000					15.807	15.807	31.354	1.242		K3+453.216	K3+468.893				28.955	136°33'51.0"		
JD39	K3+517.318	2711537.467	561141.402	左13°20'30.3"	280.000					32.748	32.748	65.200	1.909			K3+517.170				48.555	118°35'58.8"		
JD40	K3+566.911	2711524.338	561189.533	左31°53'18.8"	60.000					17.142	17.142	33.394	2.401			K3+566.466	K3+583.163			49.890	105°15'28.6"		
JD41	K3+595.975	2711532.911	561218.233	右20°44'37.0"	70.000					12.812	12.812	25.343	1.163		K3+583.163	K3+595.835	K3+608.506		15.633	29.953	73°22'09.8"		
JD42	K3+631.891	2711530.315	561254.337	右42°22'12.7"	20.000					7.752	7.752	14.790	1.450		K3+624.140	K3+631.534	K3+638.929			36.197	94°06'46.8"		
JD43	K3+654.156	2711513.651	561270.159	左62°41'16.5"	25.000					15.227	15.227	27.353	4.272		K3+638.929	K3+652.606	K3+666.282		15.250	22.978	136°28'59.5"		
JD44	K3+688.628	2711524.137	561306.238	右10°08'10.9"	80.000					7.095	7.095	14.153	0.314		K3+681.533	K3+688.609	K3+695.686		30.158	37.572	73°47'43.0"		
JD45	K3+734.727	2711529.014	561352.116	右32°59'25.9"	30.000					8.884	8.884	17.274	1.288		K3+725.844	K3+734.481	K3+743.118		19.379	46.137	83°55'54.0"		
KZD	K3+762.497	2711516.217	561377.316																	28.263	116°55'19.9"	终点K3+762.497	
																							</

纵坡、竖曲线表

路花至白面山公路工程(一期)施工图设计

第 1 页 共 1 页 S2-5

[illegible]

编制: 陈震

复核: 杨王

审核: 王钢