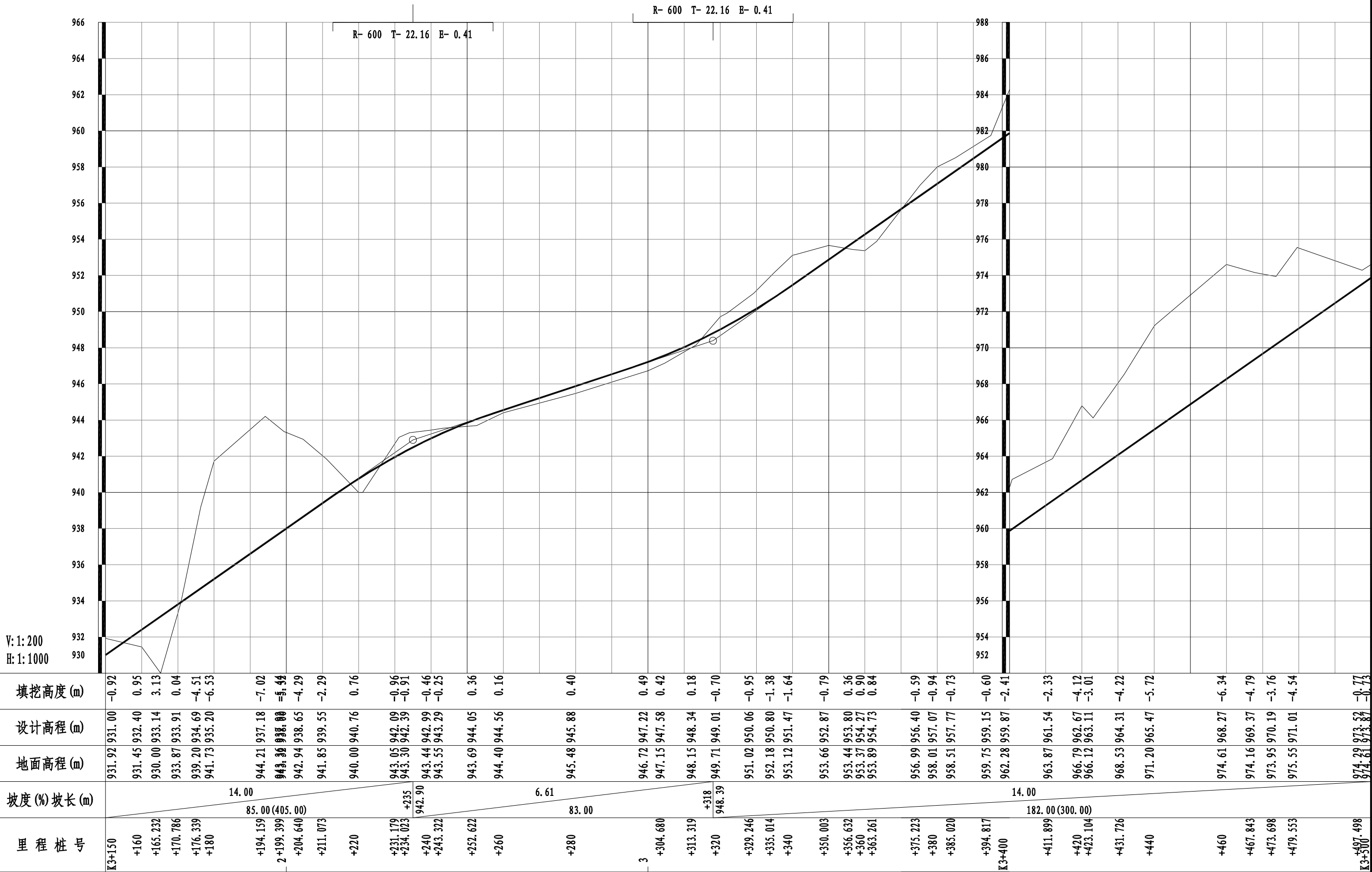
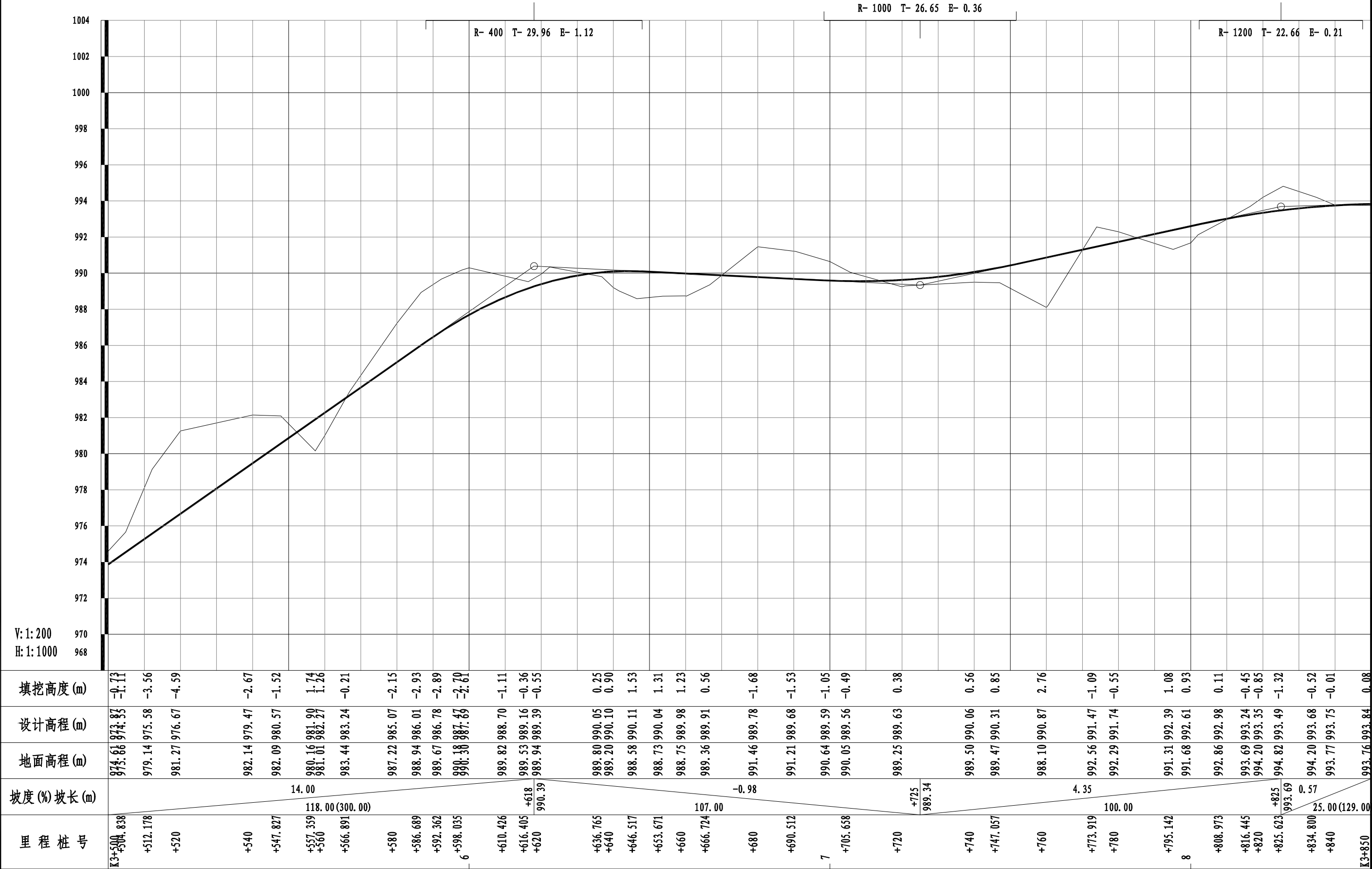


专业	签名	日期	专业	签名	日期

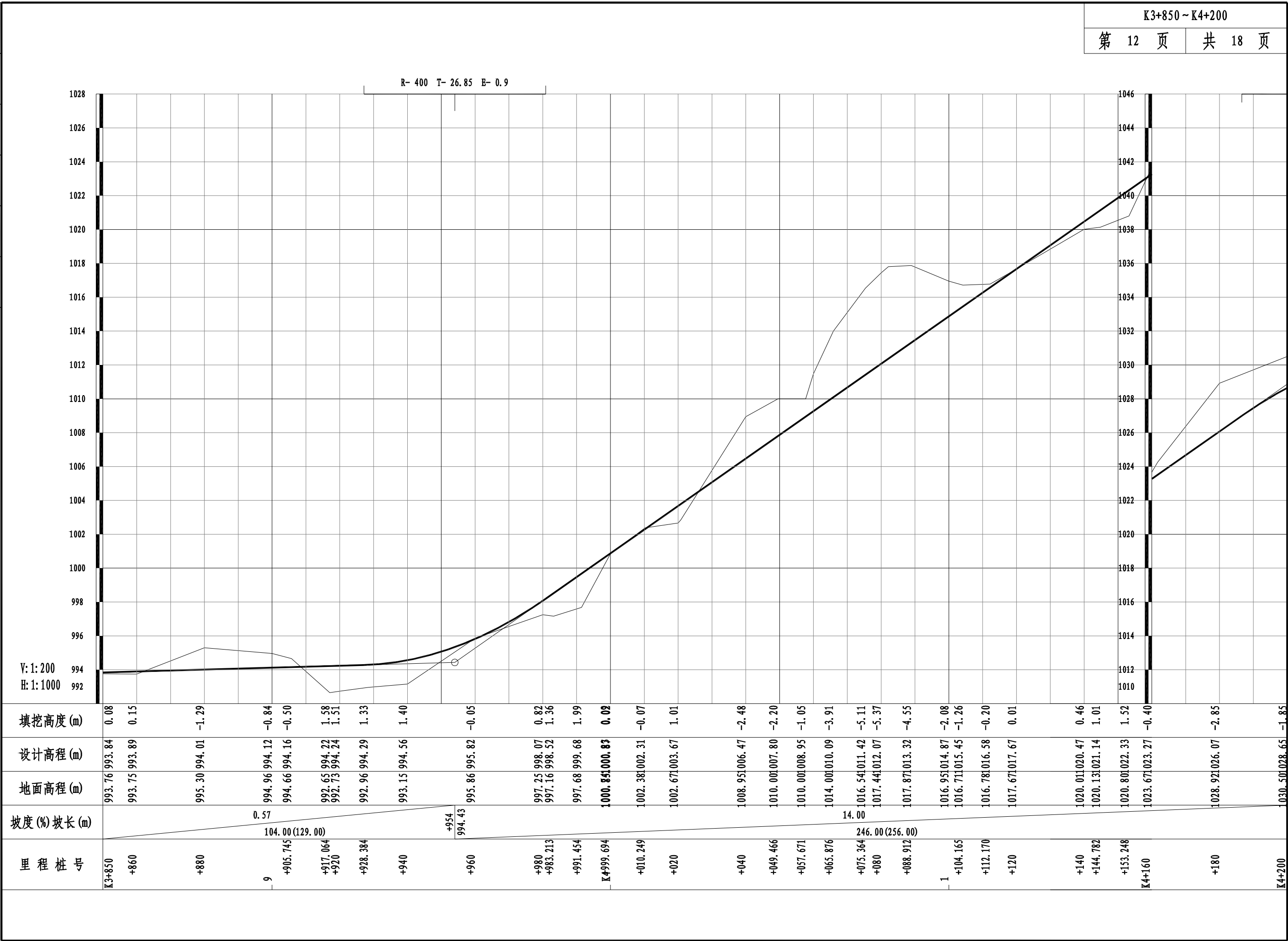
K3+150~K3+500	
第 10 页	共 18 页

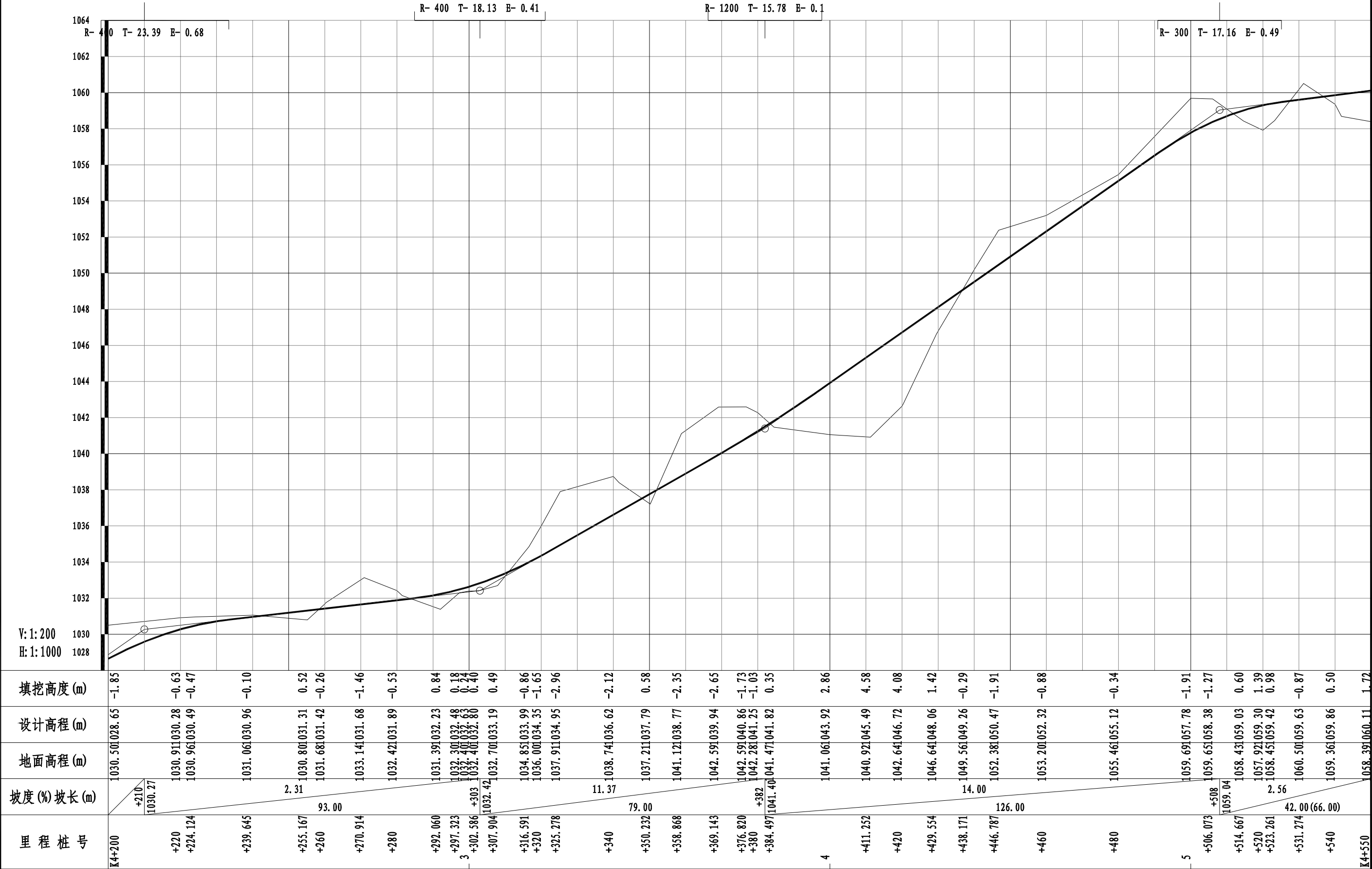


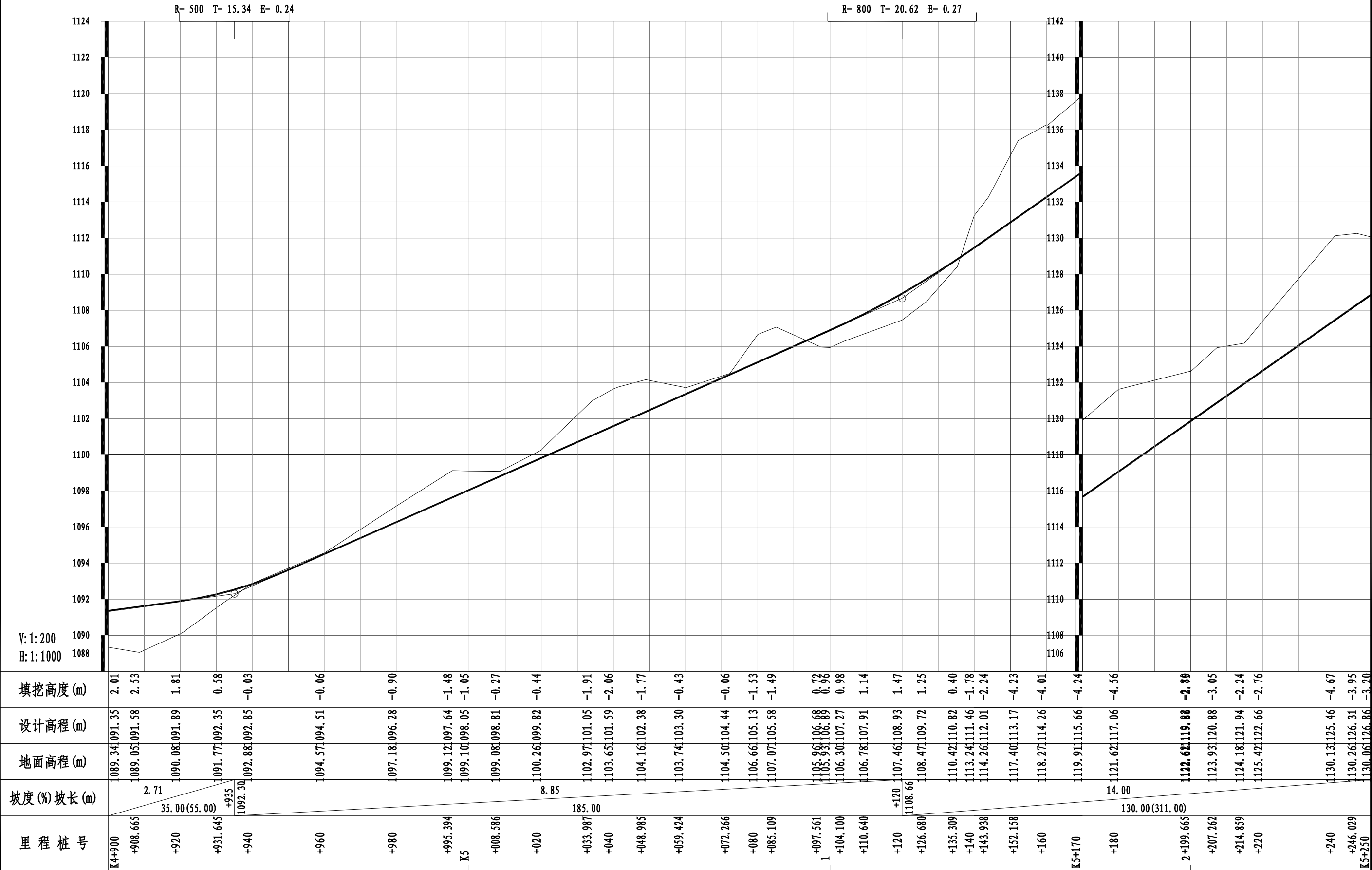


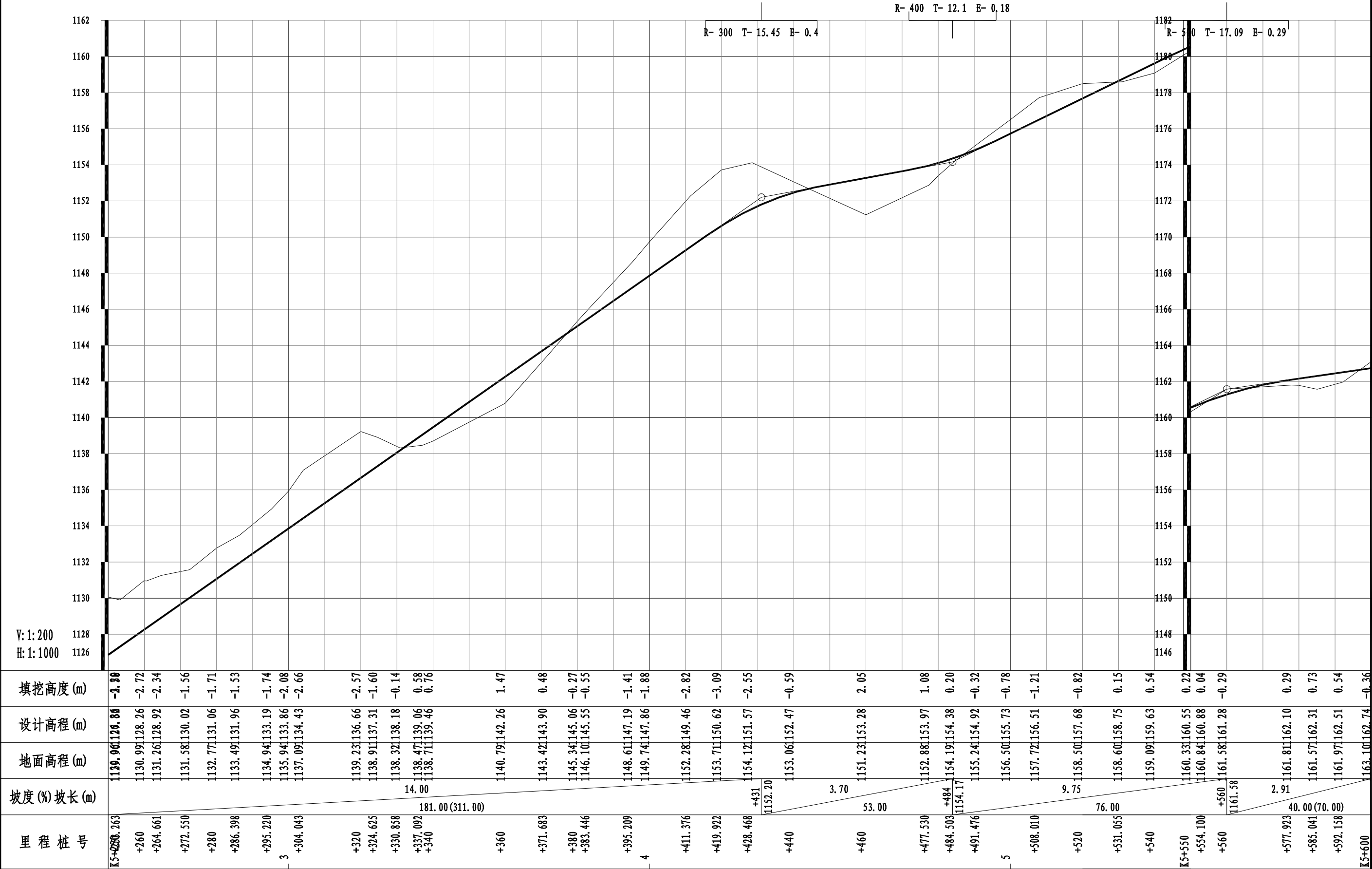
专业	签名	日期	专业	签名	日期

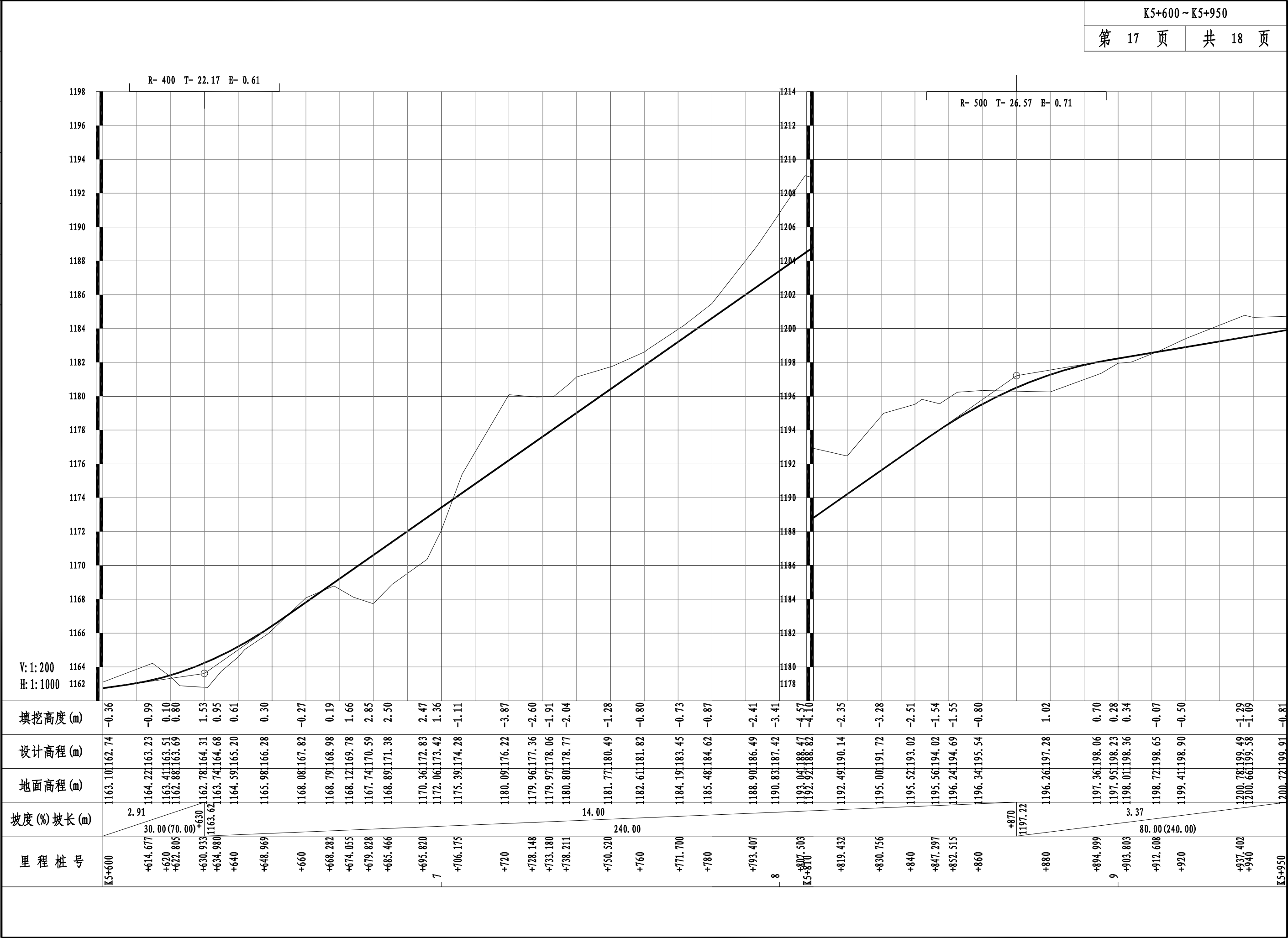
K3+850~K4+200	
第 12 页	共 18 页



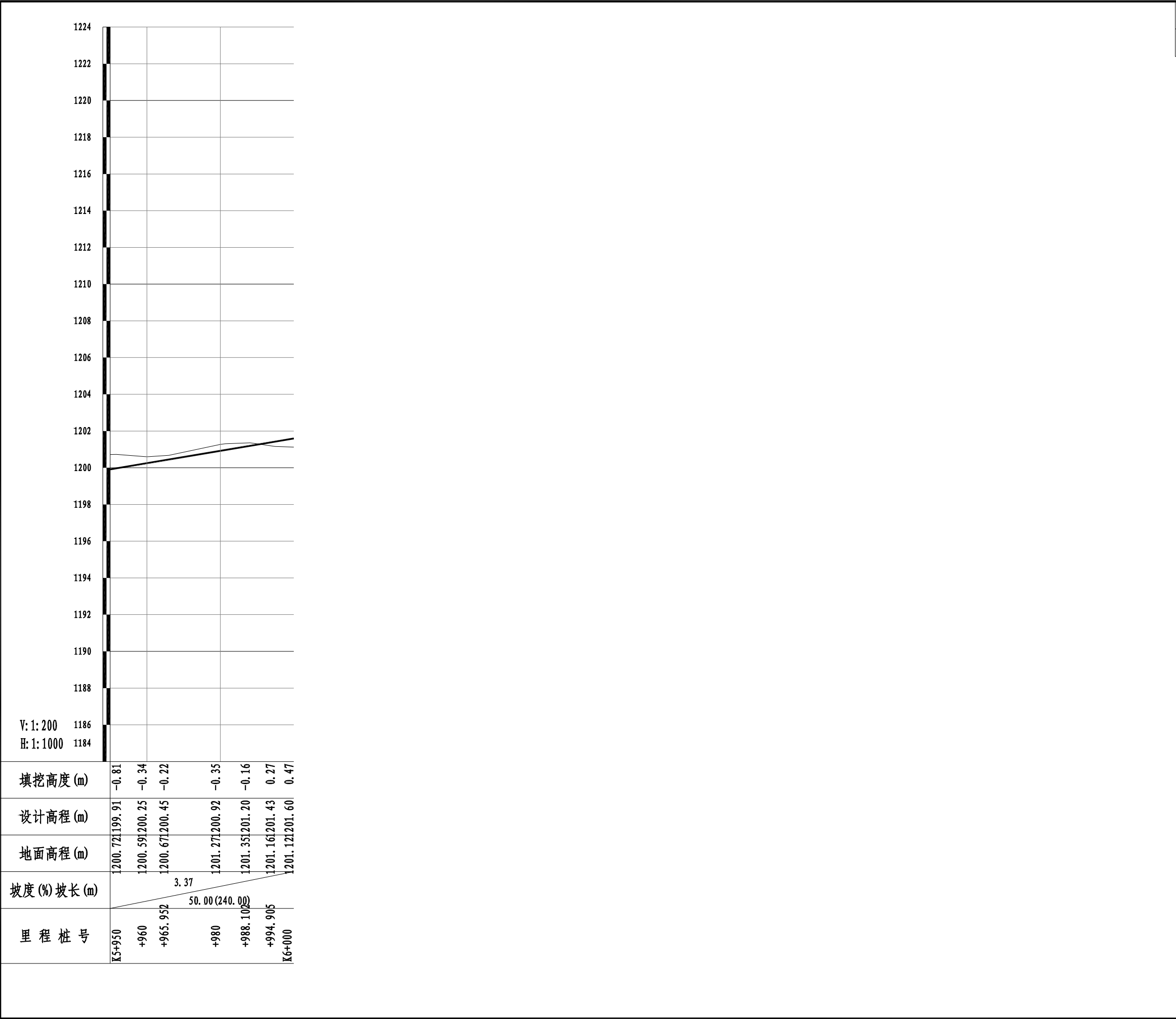








专业	签名	日期
专业	签名	日期
专业	签名	日期
专业	签名	日期
专业	签名	日期



直线、曲线及转角表

S2-3

李江村枳头组油茶生产道路建设工程

交 点 号	交 点 坐 标		交点桩号	转 角 值	曲 线 要 素 值 (m)							曲 线 主 点 桩 号					直线长度及方向			备 注
	N (X)	E (Y)			半 径	缓和曲 线长度	缓和曲 线参数	切 线 长 度	曲 线 长 度	外 距	校正值	第一缓和曲线	第一缓和曲线终 点或圆曲线起点	曲线中点	第二缓和曲线起 点或圆曲线终点	第二缓和曲线	直线段 长 (m)	交点间 距(m)	计算方位角	
1	2	3	4	5	6	7	8	9	10	11	12	13	14	15	16	17	18	19	20	21
JD0	2863635.661	37427316.78	K0+000																	
JD1	2863619.138	37427314.07	K0+016.744	96° 06′ 43″ (Z)	12			13.35	20.13	5.95	6.58		K0+003.391	K0+013.456	K0+023.521		3.39	16.74	189° 19′ 07″	
JD2	2863617.814	37427337.69	K0+033.821	10° 07′ 54″ (Z)	60			5.32	10.61	0.24	0.03		K0+028.502	K0+033.807	K0+039.112		4.98	23.65	93° 12′ 25″	
JD3	2863620.922	37427363.28	K0+059.571	45° 18′ 39″ (Y)	25			10.44	19.77	2.09	1.10		K0+049.137	K0+059.022	K0+068.907		10.02	25.78	83° 04′ 30″	
JD4	2863598.13	37427392.05	K0+095.178	43° 52′ 57″ (Z)	25			10.07	19.15	1.95	0.99		K0+085.107	K0+094.681	K0+104.255		16.20	36.71	128° 23′ 09″	
JD5	2863601.159	37427423.53	K0+125.808	106° 49′ 59″ (Y)	12			16.17	22.38	8.13	9.96		K0+109.640	K0+120.828	K0+132.015		5.39	31.62	84° 30′ 12″	
JD6	2863570.376	37427417.36	K0+147.243	14° 58′ 16″ (Z)	50			6.57	13.06	0.43	0.08		K0+140.673	K0+147.206	K0+153.738		8.66	31.40	191° 20′ 10″	
JD7	2863546.119	37427418.9	K0+171.474	30° 56′ 56″ (Z)	25			6.92	13.50	0.94	0.34		K0+164.553	K0+171.305	K0+178.057		10.81	24.31	176° 21′ 54″	
JD8	2863527.63	37427431.64	K0+193.594	21° 23′ 35″ (Y)	30			5.67	11.20	0.53	0.13		K0+187.927	K0+193.528	K0+199.128		9.87	22.46	145° 24′ 58″	
JD9	2863502.897	37427437.44	K0+218.864	32° 14′ 18″ (Y)	20			5.78	11.25	0.82	0.31		K0+213.084	K0+218.711	K0+224.337		13.96	25.40	166° 48′ 33″	
JD10	2863486.125	37427431.65	K0+236.302	31° 16′ 10″ (Z)	40			11.19	21.83	1.54	0.56		K0+225.108	K0+236.023	K0+246.938		0.77	17.74	199° 02′ 51″	
JD11	2863459.497	37427437.42	K0+262.988	46° 31′ 04″ (Z)	12			5.16	9.74	1.06	0.57		K0+257.830	K0+262.702	K0+267.573		10.89	27.24	167° 46′ 41″	
JD12	2863450.064	37427452.96	K0+280.594	24° 44′ 24″ (Y)	20			4.39	8.64	0.48	0.14		K0+276.208	K0+280.526	K0+284.844		8.64	18.18	121° 15′ 37″	
JD13	2863415.673	37427476.15	K0+321.940	47° 31′ 29″ (Y)	30			13.21	24.88	2.78	1.53		K0+308.732	K0+321.174	K0+333.615		23.89	41.48	146° 00′ 01″	
JD14	2863385.301	37427468.85	K0+351.646	20° 10′ 46″ (Z)	50			8.90	17.61	0.79	0.18		K0+342.749	K0+351.554	K0+360.359		9.13	31.24	193° 31′ 30″	
JD15	2863311.79	37427477.42	K0+425.472	7° 17′ 48″ (Y)	160			10.20	20.38	0.32	0.03		K0+415.270	K0+425.458	K0+435.646		54.91	74.01	173° 20′ 45″	

编制：

复核：

直线、曲线及转角表

S2-3

李江村枳头组油茶生产道路建设工程

交 点 号	交 点 坐 标		交点桩号	转 角 值	曲 线 要 素 值 (m)							曲 线 主 点 桩 号					直线长度及方向			备 注
	N (X)	E (Y)			半 径	缓和曲 线长度	缓和曲 线参数	切 线 长 度	曲 线 长 度	外 距	校正值	第一缓和曲线	第一缓和曲线终 点或圆曲线起点	曲线中点	第二缓和曲线起 点或圆曲线终点	第二缓和曲线	直线段 长 (m)	交点间 距 (m)	计算方位角	
1	2	3	4	5	6	7	8	9	10	11	12	13	14	15	16	17	18	19	20	21
JD15	2863311.79	37427477.42	K0+425.472	接上页																
JD16	2863234.072	37427476.55	K0+503.166	59° 11′ 38″ (Y)	38			21.58	39.26	5.70	3.91		K0+481.582	K0+501.212	K0+520.841		45.94	77.72	180° 38′ 32″	
JD17	2863197.438	37427413.52	K0+572.164	10° 59′ 22″ (Y)	130			12.51	24.93	0.60	0.08		K0+559.659	K0+572.126	K0+584.593		38.82	72.91	239° 50′ 10″	
JD18	2863170.964	37427337.39	K0+652.691	77° 33′ 12″ (Z)	12			9.64	16.24	3.39	3.04		K0+643.051	K0+651.172	K0+659.294		58.46	80.60	250° 49′ 32″	
JD19	2863146.718	37427340.25	K0+674.068	41° 20′ 31″ (Y)	20			7.55	14.43	1.38	0.66		K0+666.522	K0+673.738	K0+680.953		7.23	24.41	173° 16′ 20″	
JD20	2863102.332	37427309.61	K0+727.339	68° 08′ 26″ (Z)	12.46			8.43	14.82	2.58	2.04		K0+718.913	K0+726.322	K0+733.730		37.96	53.93	214° 36′ 51″	
JD21	2863084.744	37427321.26	K0+746.403	90° 58′ 16″ (Z)	12.46			12.67	19.78	5.31	5.56		K0+733.730	K0+743.622	K0+753.513		0.00	21.10	146° 28′ 25″	
JD22	2863122.007	37427375.49	K0+806.633	39° 25′ 46″ (Y)	55			19.71	37.85	3.42	1.57		K0+786.924	K0+805.849	K0+824.774		33.41	65.79	55° 30′ 09″	
JD23	2863117.399	37427428.89	K0+858.664	68° 01′ 16″ (Y)	20			13.50	23.74	4.13	3.25		K0+845.169	K0+857.041	K0+868.912		20.39	53.60	94° 55′ 55″	
JD24	2863036.311	37427453.75	K0+940.231	64° 01′ 12″ (Z)	12			7.50	13.41	2.15	1.59		K0+932.730	K0+939.434	K0+946.138		63.82	84.81	162° 57′ 11″	
JD25	2863032.857	37427475.72	K0+960.878	21° 05′ 30″ (Z)	30			5.59	11.04	0.52	0.13		K0+955.293	K0+960.815	K0+966.337		9.16	22.24	98° 55′ 59″	
JD26	2863044.554	37427530.01	K1+016.288	126° 40′ 49″ (Y)	12			23.90	26.53	14.74	21.27		K0+992.387	K1+005.653	K1+018.919		26.05	55.54	77° 50′ 30″	
JD27	2862988.014	37427504.22	K1+057.163	0° 20′ 12″ (Y)	100			0.29	0.59	0.00	0.00		K1+056.869	K1+057.163	K1+057.457		37.95	62.15	204° 31′ 19″	
JD28	2862947.891	37427485.63	K1+101.384	15° 52′ 50″ (Z)	100			13.95	27.72	0.97	0.18		K1+087.436	K1+101.294	K1+115.153		29.98	44.22	204° 51′ 31″	
JD29	2862900.871	37427478.2	K1+148.808	28° 15′ 57″ (Y)	50			12.59	24.67	1.56	0.51		K1+136.219	K1+148.552	K1+160.885		21.07	47.60	188° 58′ 41″	
JD30	2862859.682	37427446.89	K1+200.035	4° 10′ 27″ (Z)	65			2.37	4.74	0.04	0.00		K1+197.666	K1+200.034	K1+202.402		36.78	51.74	217° 14′ 38″	

编制：

复核：

直线、曲线及转角表

S2-3

李江村枳头组油茶生产道路建设工程

交 点 号	交 点 坐 标		交点桩号	转 角 值	曲 线 要 素 值 (m)							曲 线 主 点 桩 号					直线长度及方向			备 注
	N (X)	E (Y)			半 径	缓和曲 线长度	缓和曲 线参数	切 线 长 度	曲 线 长 度	外 距	校正值	第一缓和曲线	第一缓和曲线终 点或圆曲线起点	曲线中点	第二缓和曲线起 点或圆曲线终点	第二缓和曲线	直线段 长 (m)	交点间 距 (m)	计算方位角	
1	2	3	4	5	6	7	8	9	10	11	12	13	14	15	16	17	18	19	20	21
JD30	2862859.682	37427446.89	K1+200.035	接上页																
JD31	2862806.995	37427412.58	K1+262.906	65° 35′ 02″ (Z)	20			12.89	22.89	3.79	2.88		K1+250.020	K1+261.467	K1+272.914		47.62	62.87	213° 04′ 11″	
JD32	2862760.433	37427442.26	K1+315.245	105° 59′ 23″ (Y)	10.25			13.61	18.97	6.78	8.24		K1+301.639	K1+311.124	K1+320.609		28.73	55.22	147° 29′ 09″	
JD33	2862754.075	37427420.83	K1+329.356	80° 56′ 03″ (Y)	10.25			8.75	14.49	3.22	3.01		K1+320.609	K1+327.851	K1+335.094		0.00	22.35	253° 28′ 32″	
JD34	2862811.225	37427393.46	K1+389.711	57° 16′ 45″ (Y)	30			16.38	29.99	4.18	2.78		K1+373.328	K1+388.324	K1+403.319		38.23	63.37	334° 24′ 35″	
JD35	2862899.412	37427447.9	K1+490.574	16° 13′ 29″ (Z)	160			22.81	45.31	1.62	0.31		K1+467.767	K1+490.421	K1+513.075		64.45	103.64	31° 41′ 20″	
JD36	2862962.168	37427465.26	K1+555.381	99° 25′ 26″ (Z)	12			14.16	20.82	6.56	7.49		K1+541.226	K1+551.637	K1+562.049		28.15	65.11	15° 27′ 51″	
JD37	2862968.723	37427403.31	K1+610.192	22° 13′ 58″ (Y)	90			17.68	34.92	1.72	0.45		K1+592.508	K1+609.970	K1+627.431		30.46	62.30	276° 02′ 25″	
JD38	2862998.887	37427347.23	K1+673.427	63° 57′ 14″ (Z)	50			31.22	55.81	8.94	6.62		K1+642.212	K1+670.117	K1+698.022		14.78	63.68	298° 16′ 23″	
JD39	2862907.162	37427219.49	K1+824.065	102° 42′ 35″ (Y)	15			18.76	26.89	9.02	10.63		K1+805.305	K1+818.750	K1+832.195		107.28	157.26	234° 19′ 09″	
JD40	2862969.435	37427193.09	K1+881.071	11° 46′ 41″ (Y)	150			15.47	30.83	0.80	0.11		K1+865.599	K1+881.017	K1+896.434		33.40	67.64	337° 01′ 44″	
JD41	2863023.449	37427182.41	K1+936.024	60° 11′ 02″ (Z)	40			23.18	42.02	6.23	4.34		K1+912.844	K1+933.852	K1+954.861		16.41	55.06	348° 48′ 25″	
JD42	2863048.922	37427106.82	K2+011.446	59° 20′ 37″ (Y)	30			17.09	31.07	4.53	3.11		K1+994.354	K2+009.890	K2+025.427		39.49	79.77	288° 37′ 23″	
JD43	2863095.918	37427096.8	K2+056.386	31° 18′ 45″ (Z)	30			8.41	16.40	1.16	0.42		K2+047.978	K2+056.176	K2+064.374		22.55	48.05	347° 57′ 59″	
JD44	2863160.448	37427035.89	K2+144.701	126° 03′ 23″ (Y)	12			23.58	26.40	14.46	20.76		K2+121.121	K2+134.321	K2+147.522		56.75	88.74	316° 39′ 15″	
JD45	2863170.171	37427111.9	K2+200.570	40° 13′ 52″ (Z)	40			14.65	28.09	2.60	1.21		K2+185.919	K2+199.963	K2+214.006		38.40	76.63	82° 42′ 38″	

编制：

复核：

直线、曲线及转角表

S2-3

李江村枳头组油茶生产道路建设工程

交 点 号	交 点 坐 标		交点桩号	转 角 值	曲 线 要 素 值 (m)							曲 线 主 点 桩 号					直线长度及方向			备 注
	N (X)	E (Y)			半 径	缓和曲 线长度	缓和曲 线参数	切 线 长 度	曲 线 长 度	外 距	校正值	第一缓和曲线	第一缓和曲线终 点或圆曲线起点	曲线中点	第二缓和曲线起 点或圆曲线终点	第二缓和曲线	直线段 长 (m)	交点间 距 (m)	计算方位角	
1	2	3	4	5	6	7	8	9	10	11	12	13	14	15	16	17	18	19	20	21
JD45	2863170.171	37427111.9	K2+200.570	接上页																
JD46	2863224.58	37427161.72	K2+273.129	32° 16′ 09″ (Z)	45			13.02	25.34	1.85	0.69		K2+260.111	K2+272.784	K2+285.456		46.11	73.77	42° 28′ 46″	
JD47	2863381.186	37427189.93	K2+431.563	54° 18′ 39″ (Z)	30			15.39	28.44	3.72	2.34		K2+416.175	K2+430.393	K2+444.612		130.72	159.13	10° 12′ 36″	
JD48	2863459.38	37427114.15	K2+538.111	30° 20′ 56″ (Y)	55			14.92	29.13	1.99	0.70		K2+523.194	K2+537.761	K2+552.327		78.58	108.89	315° 53′ 57″	
JD49	2863516.639	37427100.14	K2+596.359	81° 19′ 24″ (Z)	22			18.90	31.23	7.00	6.57		K2+577.461	K2+593.074	K2+608.687		25.13	58.95	346° 14′ 53″	
JD50	2863511.223	37427039.15	K2+651.014	74° 09′ 37″ (Y)	15			11.34	19.42	3.80	3.26		K2+639.678	K2+649.385	K2+659.093		30.99	61.22	264° 55′ 29″	
JD51	2863549.422	37427024.55	K2+688.650	39° 57′ 27″ (Z)	50			18.18	34.87	3.20	1.49		K2+670.473	K2+687.908	K2+705.342		11.38	40.89	339° 05′ 06″	
JD52	2863581.043	37426967.8	K2+752.128	122° 23′ 15″ (Y)	12			21.82	25.63	12.90	18.01		K2+730.306	K2+743.122	K2+755.939		24.96	64.96	299° 07′ 40″	
JD53	2863622.723	37427044.62	K2+821.509	35° 29′ 38″ (Z)	60			19.20	37.17	3.00	1.24		K2+802.306	K2+820.891	K2+839.475		46.37	87.39	61° 30′ 55″	
JD54	2863668.407	37427066.92	K2+871.111	67° 12′ 25″ (Z)	20			13.29	23.46	4.01	3.12		K2+857.821	K2+869.551	K2+881.281		18.35	50.84	26° 01′ 17″	
JD55	2863729.133	37427013.79	K2+948.681	13° 26′ 18″ (Y)	70			8.25	16.42	0.48	0.08		K2+940.434	K2+948.643	K2+956.852		59.15	80.69	318° 48′ 53″	
JD56	2863769.779	37426992.4	K2+994.532	15° 23′ 22″ (Z)	100			13.51	26.86	0.91	0.16		K2+981.021	K2+994.451	K3+007.881		24.17	45.93	332° 15′ 10″	
JD57	2863806.987	37426957.54	K3+045.358	46° 20′ 12″ (Z)	35			14.98	28.31	3.07	1.65		K3+030.380	K3+044.533	K3+058.686		22.50	50.99	316° 51′ 48″	
JD58	2863807.608	37426890.01	K3+111.238	22° 11′ 07″ (Y)	40			7.84	15.49	0.76	0.20		K3+103.395	K3+111.139	K3+118.884		44.71	67.53	270° 31′ 37″	
JD59	2863816.729	37426868.22	K3+134.665	33° 02′ 23″ (Y)	35			10.38	20.18	1.51	0.58		K3+124.284	K3+134.376	K3+144.467		5.40	23.62	292° 42′ 44″	
JD60	2863847.423	37426847.32	K3+171.219	53° 01′ 48″ (Y)	12			5.99	11.11	1.41	0.87		K3+165.232	K3+170.786	K3+176.339		20.77	37.13	325° 45′ 07″	

编制:

复核:

直线、曲线及转角表

S2-3

李江村枳头组油茶生产道路建设工程

交 点 号	交 点 坐 标		交点桩号	转 角 值	曲 线 要 素 值 (m)							曲 线 主 点 桩 号					直线长度及方向			备 注
	N (X)	E (Y)			半 径	缓和曲 线长度	缓和曲 线参数	切 线 长 度	曲 线 长 度	外 距	校正值	第一缓和曲线	第一缓和曲线终 点或圆曲线起点	曲线中点	第二缓和曲线起 点或圆曲线终点	第二缓和曲线	直线段 长 (m)	交点间 距 (m)	计算方位角	
1	2	3	4	5	6	7	8	9	10	11	12	13	14	15	16	17	18	19	20	21
JD60	2863847.423	37426847.32	K3+171.219	接上页																
																	17.82	29.41	18° 46′ 55″	
JD61	2863875.265	37426856.79	K3+199.760	50° 02′ 26″ (Z)	12			5.60	10.48	1.24	0.72		K3+194.159	K3+199.399	K3+204.640		6.43	25.36	328° 44′ 29″	
JD62	2863896.945	37426843.63	K3+224.400	96° 00′ 01″ (Y)	12			13.33	20.11	5.93	6.55		K3+211.073	K3+221.126	K3+231.179		2.84	27.92	64° 44′ 30″	
JD63	2863908.86	37426868.89	K3+245.775	88° 48′ 11″ (Z)	12			11.75	18.60	4.80	4.91		K3+234.023	K3+243.322	K3+252.622		52.06	73.03	335° 56′ 19″	
JD64	2863975.544	37426839.11	K3+313.900	49° 29′ 46″ (Y)	20			9.22	17.28	2.02	1.16		K3+304.680	K3+313.319	K3+321.958		7.29	22.44	25° 26′ 05″	
JD65	2863995.81	37426848.75	K3+335.179	33° 02′ 51″ (Y)	20			5.93	11.54	0.86	0.33		K3+329.246	K3+335.014	K3+340.782		9.22	22.04	58° 28′ 56″	
JD66	2864007.33	37426867.54	K3+356.886	37° 58′ 58″ (Z)	20			6.88	13.26	1.15	0.51		K3+350.003	K3+356.632	K3+363.261		11.96	28.84	20° 29′ 58″	
JD67	2864034.347	37426877.64	K3+385.221	28° 03′ 58″ (Y)	40			10.00	19.59	1.23	0.40		K3+375.223	K3+385.020	K3+394.817		5.88	31.88	48° 33′ 56″	
JD68	2864055.446	37426901.54	K3+416.702	105° 31′ 18″ (Z)	12.17			16.01	22.41	7.94	9.61		K3+400.694	K3+411.899	K3+423.104		0.00	26.44	303° 02′ 38″	
JD69	2864069.861	37426879.38	K3+433.532	81° 11′ 38″ (Z)	12.17			10.43	17.24	3.86	3.61		K3+423.104	K3+431.726	K3+440.348		27.49	44.09	221° 50′ 60″	
JD70	2864037.015	37426849.96	K3+474.014	44° 43′ 45″ (Y)	15			6.17	11.71	1.22	0.63		K3+467.843	K3+473.698	K3+479.553		17.95	31.61	266° 34′ 45″	
JD71	2864035.129	37426818.41	K3+504.988	28° 02′ 11″ (Z)	30			7.49	14.68	0.92	0.30		K3+497.498	K3+504.838	K3+512.178		35.65	55.36	238° 32′ 34″	
JD72	2864006.241	37426771.19	K3+560.044	91° 01′ 25″ (Z)	12			12.22	19.06	5.12	5.37		K3+547.827	K3+557.359	K3+566.891		19.80	37.73	147° 31′ 10″	
JD73	2863974.417	37426791.45	K3+592.400	16° 15′ 04″ (Y)	40			5.71	11.35	0.41	0.08		K3+586.689	K3+592.362	K3+598.035		12.39	24.20	163° 46′ 14″	
JD74	2863951.184	37426798.21	K3+616.521	27° 24′ 09″ (Y)	25			6.10	11.96	0.73	0.23		K3+610.426	K3+616.405	K3+622.383		14.38	25.40	191° 10′ 23″	
JD75	2863926.269	37426793.29	K3+641.684	18° 37′ 28″ (Y)	30			4.92	9.75	0.40	0.09		K3+636.765	K3+641.641	K3+646.517					

编制:

复核:

直线、曲线及转角表

S2-3

李江村枳头组油茶生产道路建设工程

交 点 号	交 点 坐 标		交点桩号	转 角 值	曲 线 要 素 值 (m)							曲 线 主 点 桩 号					直线长度及方向			备 注
	N (X)	E (Y)			半 径	缓和曲 线长度	缓和曲 线参数	切 线 长 度	曲 线 长 度	外 距	校正值	第一缓和曲线	第一缓和曲线终 点或圆曲线起点	曲线中点	第二缓和曲线起 点或圆曲线终点	第二缓和曲线	直线段 长 (m)	交点间 距 (m)	计算方位角	
1	2	3	4	5	6	7	8	9	10	11	12	13	14	15	16	17	18	19	20	21
JD75	2863926.269	37426793.29	K3+641.684	接上页																
JD76	2863909.995	37426783.97	K3+660.350	29° 54′ 54″ (Z)	25			6.68	13.05	0.88	0.31		K3+653.671	K3+660.198	K3+666.724		7.15	18.75	209° 47′ 51″	
JD77	2863862.836	37426784.07	K3+707.205	59° 51′ 02″ (Y)	29			16.69	30.29	4.46	3.09		K3+690.512	K3+705.658	K3+720.805		23.79	47.16	179° 52′ 57″	
JD78	2863833.684	37426734.11	K3+761.949	61° 33′ 48″ (Z)	25			14.89	26.86	4.10	2.92		K3+747.057	K3+760.488	K3+773.919		26.25	57.84	239° 43′ 59″	
JD79	2863789.793	37426735.52	K3+802.941	66° 02′ 20″ (Z)	12			7.80	13.83	2.31	1.77		K3+795.142	K3+802.058	K3+808.973		21.22	43.91	178° 10′ 11″	
JD80	2863780.075	37426759.41	K3+826.970	70° 06′ 35″ (Y)	15			10.53	18.35	3.32	2.69		K3+816.445	K3+825.623	K3+834.800		7.47	25.80	112° 07′ 52″	
JD81	2863683.249	37426755.62	K3+921.177	99° 46′ 36″ (Z)	13			15.43	22.64	7.18	8.23		K3+905.745	K3+917.064	K3+928.384		70.94	96.90	182° 14′ 27″	
JD82	2863693.751	37426835.01	K3+993.031	78° 18′ 11″ (Y)	12.06			9.82	16.48	3.49	3.16		K3+983.213	K3+991.454	K3+999.694		54.83	80.08	82° 27′ 51″	
JD83	2863670.838	37426843	K4+014.143	100° 18′ 20″ (Y)	12.06			14.45	21.11	6.76	7.79		K3+999.694	K4+010.249	K4+020.805		0.00	24.27	160° 46′ 03″	
JD84	2863662.851	37426792.16	K4+057.825	26° 51′ 54″ (Z)	35			8.36	16.41	0.98	0.31		K4+049.466	K4+057.671	K4+065.876		28.66	51.47	261° 04′ 23″	
JD85	2863648.383	37426772.09	K4+082.255	25° 52′ 27″ (Y)	30			6.89	13.55	0.78	0.24		K4+075.364	K4+082.138	K4+088.912		9.49	24.74	234° 12′ 29″	
JD86	2863643.141	37426742.11	K4+112.455	36° 41′ 21″ (Y)	25			8.29	16.01	1.34	0.57		K4+104.165	K4+112.170	K4+120.174		15.25	30.43	260° 04′ 56″	
JD87	2863662.236	37426704.26	K4+154.278	64° 40′ 22″ (Y)	15			9.50	16.93	2.75	2.06		K4+144.782	K4+153.248	K4+161.713		24.61	42.39	296° 46′ 17″	
JD88	2863751.187	37426706.51	K4+241.197	59° 17′ 16″ (Z)	30			17.07	31.04	4.52	3.10		K4+224.124	K4+239.645	K4+255.167		62.41	88.98	1° 26′ 39″	
JD89	2863768.832	37426678.44	K4+271.247	34° 35′ 53″ (Y)	35			10.90	21.13	1.66	0.67		K4+260.346	K4+270.914	K4+281.481		5.18	33.15	302° 09′ 23″	
JD90	2863793.565	37426667.81	K4+297.498	35° 28′ 42″ (Y)	17			5.44	10.53	0.85	0.35		K4+292.060	K4+297.323	K4+302.586		10.58	26.92	336° 45′ 16″	

编制：

复核：

直线、曲线及转角表

S2-3

李江村枳头组油茶生产道路建设工程

交点号	交点坐标		交点桩号	转角值	曲线要素值 (m)							曲线主点桩号					直线长度及方向			备注
	N (X)	E (Y)			半径	缓和曲线长度	缓和曲线参数	切线长度	曲线长度	外距	校正值	第一缓和曲线	第一缓和曲线终点或圆曲线起点	曲线中点	第二缓和曲线起点或圆曲线终点	第二缓和曲线	直线段长 (m)	交点间距 (m)	计算方位角	
1	2	3	4	5	6	7	8	9	10	11	12	13	14	15	16	17	18	19	20	21
JD90	2863793.565	37426667.81	K4+297.498	接上页																
JD91	2863813.144	37426672.06	K4+317.182	49° 46′ 19″ (Z)	20			9.28	17.37	2.05	1.18		K4+307.904	K4+316.591	K4+325.278		5.32	20.03	12° 13′ 58″	
JD92	2863841.779	37426650.06	K4+352.114	82° 28′ 28″ (Y)	12			10.52	17.27	3.96	3.77		K4+341.595	K4+350.232	K4+358.868		16.32	36.11	322° 27′ 39″	
JD93	2863862.056	37426670.29	K4+376.992	29° 19′ 32″ (Y)	30			7.85	15.35	1.01	0.34		K4+369.143	K4+376.820	K4+384.497		10.27	28.64	44° 56′ 07″	
JD94	2863874.784	37426715.45	K4+423.569	98° 04′ 51″ (Z)	10.69			12.32	18.30	5.62	6.33		K4+411.252	K4+420.403	K4+429.554		26.75	46.92	74° 15′ 39″	
JD95	2863896.242	37426705.97	K4+440.694	92° 20′ 57″ (Z)	10.69			11.14	17.23	4.75	5.05		K4+429.554	K4+438.171	K4+446.787		0.00	23.46	336° 10′ 47″	
JD96	2863861.373	37426635.02	K4+514.710	14° 04′ 09″ (Z)	70			8.64	17.19	0.53	0.09		K4+506.073	K4+514.667	K4+523.261		59.29	79.06	243° 49′ 50″	
JD97	2863841.328	37426611.33	K4+545.655	100° 18′ 49″ (Z)	12			14.38	21.01	6.73	7.75		K4+531.274	K4+541.779	K4+552.284		8.01	31.03	229° 45′ 42″	
JD98	2863819.964	37426637.29	K4+571.526	71° 13′ 47″ (Y)	12			8.60	14.92	2.76	2.27		K4+562.930	K4+570.390	K4+577.849		10.65	33.62	129° 26′ 53″	
JD99	2863802.913	37426630.86	K4+587.478	17° 19′ 12″ (Y)	30			4.57	9.07	0.35	0.07		K4+582.909	K4+587.443	K4+591.977		5.06	18.22	200° 40′ 40″	
JD100	2863773.878	37426608.17	K4+624.254	100° 08′ 19″ (Z)	12			14.34	20.97	6.70	7.70		K4+609.917	K4+620.404	K4+630.890		17.94	36.85	217° 59′ 51″	
JD101	2863751.268	37426650.95	K4+664.938	69° 04′ 02″ (Y)	30			20.64	36.16	6.42	5.13		K4+644.294	K4+662.375	K4+680.457		13.40	48.38	117° 51′ 32″	
JD102	2863697.706	37426644.44	K4+713.768	11° 11′ 36″ (Y)	120			11.76	23.44	0.57	0.08		K4+702.009	K4+713.731	K4+725.452		21.55	53.96	186° 55′ 34″	
JD103	2863654.061	37426630.16	K4+759.616	6° 55′ 05″ (Z)	160			9.67	19.32	0.29	0.02		K4+749.945	K4+759.605	K4+769.264		24.49	45.92	198° 07′ 10″	
JD104	2863606.682	37426620.78	K4+807.891	24° 07′ 36″ (Z)	50			10.69	21.05	1.13	0.32		K4+797.206	K4+807.733	K4+818.260		27.94	48.30	191° 12′ 06″	
JD105	2863559.177	37426631.68	K4+856.315	38° 37′ 13″ (Y)	45			15.77	30.33	2.68	1.20		K4+840.547	K4+855.713	K4+870.879		22.29	48.74	167° 04′ 30″	

编制:

复核:

直线、曲线及转角表

S2-3

李江村枳头组油茶生产道路建设工程

交点号	交点坐标		交点桩号	转角值	曲线要素值 (m)							曲线主点桩号					直线长度及方向			备注
	N (X)	E (Y)			半径	缓和曲线长度	缓和曲线参数	切线长度	曲线长度	外距	校正值	第一缓和曲线	第一缓和曲线终点或圆曲线起点	曲线中点	第二缓和曲线起点或圆曲线终点	第二缓和曲线	直线段长 (m)	交点间距 (m)	计算方位角	
1	2	3	4	5	6	7	8	9	10	11	12	13	14	15	16	17	18	19	20	21
JD105	2863559.177	37426631.68	K4+856.315	接上页																
JD106	2863518.648	37426612.18	K4+900.088	6° 33′ 34″ (Y)	150			8.60	17.17	0.25	0.02		K4+891.492	K4+900.079	K4+908.665		20.61	44.98	205° 41′ 43″	
JD107	2863491.901	37426595.3	K4+931.697	13° 47′ 32″ (Z)	90			10.89	21.66	0.66	0.11		K4+920.812	K4+931.645	K4+942.477		12.15	31.63	212° 15′ 17″	
JD108	2863418.498	37426570.79	K5+008.978	33° 35′ 40″ (Y)	45			13.58	26.38	2.01	0.78		K4+995.394	K5+008.586	K5+021.779		52.92	77.39	198° 27′ 46″	
JD109	2863397.985	37426544.48	K5+041.556	19° 05′ 46″ (Y)	45			7.57	15.00	0.63	0.14		K5+033.987	K5+041.486	K5+048.985		12.21	33.36	232° 03′ 25″	
JD110	2863387.796	37426514.63	K5+072.957	44° 35′ 39″ (Z)	33			13.53	25.68	2.67	1.38		K5+059.424	K5+072.266	K5+085.109		10.44	31.54	251° 09′ 12″	
JD111	2863358.047	37426499.76	K5+104.835	62° 26′ 44″ (Z)	12			7.27	13.08	2.03	1.47		K5+097.561	K5+104.100	K5+110.640		12.45	33.26	206° 33′ 33″	
JD112	2863330.286	37426519.85	K5+137.630	89° 28′ 30″ (Y)	11.05			10.95	17.26	4.51	4.64		K5+126.680	K5+135.309	K5+143.938		16.04	34.26	144° 06′ 49″	
JD113	2863317.751	37426502.85	K5+154.106	85° 14′ 11″ (Y)	11.05			10.17	16.44	3.97	3.90		K5+143.938	K5+152.158	K5+160.378		0.00	21.12	233° 35′ 18″	
JD114	2863361.449	37426464.63	K5+208.264	66° 57′ 60″ (Y)	13			8.60	15.19	2.59	2.00		K5+199.665	K5+207.262	K5+214.859		39.29	58.05	318° 49′ 30″	
JD115	2863403.958	37426485.17	K5+253.472	33° 09′ 37″ (Z)	25			7.44	14.47	1.08	0.42		K5+246.029	K5+253.263	K5+260.498		31.17	47.21	25° 47′ 29″	
JD116	2863424.655	37426482.5	K5+273.924	75° 19′ 42″ (Y)	12			9.26	15.78	3.16	2.75		K5+264.661	K5+272.550	K5+280.438		4.16	20.87	352° 37′ 52″	
JD117	2863433.911	37426505.36	K5+295.841	50° 32′ 57″ (Z)	20			9.44	17.65	2.12	1.24		K5+286.398	K5+295.220	K5+304.043		5.96	24.67	67° 57′ 34″	
JD118	2863468.54	37426516.22	K5+330.891	14° 17′ 07″ (Z)	50			6.27	12.47	0.39	0.07		K5+324.625	K5+330.858	K5+337.092		20.58	36.29	17° 24′ 37″	
JD119	2863521.136	37426519.09	K5+383.501	13° 28′ 46″ (Y)	100			11.82	23.53	0.70	0.11		K5+371.683	K5+383.446	K5+395.209		34.59	52.67	3° 07′ 29″	
JD120	2863556.224	37426529.55	K5+420.006	19° 35′ 08″ (Z)	50			8.63	17.09	0.74	0.17		K5+411.376	K5+419.922	K5+428.468		16.17	36.61	16° 36′ 15″	

编制:

复核:

直线、曲线及转角表

S2-3

李江村枳头组油茶生产道路建设工程

交点号	交点坐标		交点桩号	转角值	曲线要素值 (m)							曲线主点桩号					直线长度及方向			备注
	N (X)	E (Y)			半径	缓和曲线长度	缓和曲线参数	切线长度	曲线长度	外距	校正值	第一缓和曲线	第一缓和曲线终点或圆曲线起点	曲线中点	第二缓和曲线起点或圆曲线终点	第二缓和曲线	直线段长 (m)	交点间距 (m)	计算方位角	
1	2	3	4	5	6	7	8	9	10	11	12	13	14	15	16	17	18	19	20	21
JD120	2863556.224	37426529.55	K5+420.006	接上页																
JD121	2863620.988	37426526.18	K5+484.690	31° 57′ 39″ (Y)	25			7.16	13.95	1.00	0.37		K5+477.530	K5+484.503	K5+491.476		49.06	64.85	357° 01′ 07″	
JD122	2863663.435	37426549.69	K5+532.838	52° 48′ 54″ (Z)	50			24.83	46.09	5.83	3.57		K5+508.010	K5+531.055	K5+554.100		16.53	48.52	28° 58′ 46″	
JD123	2863714.465	37426527.14	K5+585.059	10° 11′ 43″ (Y)	80			7.14	14.24	0.32	0.04		K5+577.923	K5+585.041	K5+592.158		23.82	55.79	336° 09′ 52″	
JD124	2863751.231	37426518.22	K5+622.855	15° 31′ 23″ (Z)	60			8.18	16.26	0.55	0.10		K5+614.677	K5+622.805	K5+630.933		22.52	37.83	346° 21′ 35″	
JD125	2863768.179	37426508.76	K5+642.163	32° 03′ 37″ (Y)	25			7.18	13.99	1.01	0.38		K5+634.980	K5+641.975	K5+648.969		4.05	19.41	330° 50′ 12″	
JD126	2863800.897	37426510.42	K5+674.546	55° 07′ 41″ (Z)	12			6.26	11.55	1.54	0.98		K5+668.282	K5+674.055	K5+679.828		19.31	32.76	2° 53′ 49″	
JD127	2863815.163	37426492.01	K5+696.857	59° 19′ 42″ (Y)	20			11.39	20.71	3.02	2.07		K5+685.466	K5+695.820	K5+706.175		5.64	23.29	307° 46′ 08″	
JD128	2863853.58	37426496.79	K5+733.497	48° 03′ 04″ (Z)	12			5.35	10.06	1.14	0.64		K5+728.148	K5+733.180	K5+738.211		21.97	38.71	7° 05′ 51″	
JD129	2863874.998	37426478.2	K5+761.222	20° 13′ 31″ (Y)	60			10.70	21.18	0.95	0.22		K5+750.520	K5+761.110	K5+771.700		12.31	28.36	319° 02′ 46″	
JD130	2863911.944	37426464.22	K5+800.502	16° 09′ 13″ (Z)	50			7.10	14.10	0.50	0.09		K5+793.407	K5+800.455	K5+807.503		21.71	39.50	339° 16′ 17″	
JD131	2863938.448	37426444.33	K5+833.544	86° 30′ 14″ (Z)	15			14.11	22.65	5.59	5.58		K5+819.432	K5+830.756	K5+842.079		11.93	33.14	323° 07′ 04″	
JD132	2863927.771	37426428.13	K5+847.371	23° 31′ 23″ (Z)	25.42			5.29	10.44	0.55	0.15		K5+842.079	K5+847.297	K5+852.515		0.00	19.40	236° 36′ 51″	
JD133	2863880.328	37426397.22	K5+903.850	14° 24′ 48″ (Y)	70			8.85	17.61	0.56	0.09		K5+894.999	K5+903.803	K5+912.608		42.48	56.63	213° 05′ 27″	
JD134	2863846.75	37426360.57	K5+953.461	65° 25′ 53″ (Z)	25			16.06	28.55	4.71	3.57		K5+937.402	K5+951.677	K5+965.952		24.79	49.70	227° 30′ 16″	
JD135	2863810.356	37426372.34	K5+988.144	15° 35′ 35″ (Y)	50			6.85	13.61	0.47	0.09		K5+981.298	K5+988.102	K5+994.905		15.35	38.25	162° 04′ 22″	

编制:

复核:

直线、曲线及转角表

S2-3

李江村枳头组油茶生产道路建设工程

第 10 页 共 10 页

[illegible]

编制:

复核:

纵 坡 、 竖 曲 线 表

S2-4

李江村枳头组油茶生产道路建设工程

序 号	桩 号	竖 曲 线							纵 坡（%）		变坡点间距	直坡段长	备 注
		标 高（m）	凸曲线半径R（m）	凹曲线半径R（m）	切线长T（m）	外距E（m）	起点桩号	终点桩号	+	-	（m）	（m）	
0	K0+000	689.849											
1	K0+045	684.449		200	12.61	0.40	K0+032.390	K0+057.610		-12	45	32.39	
2	K0+110	684.846		400	15.51	0.30	K0+094.492	K0+125.508	0.61		65	36.88	
3	K0+270	698.228	700		23.36	0.39	K0+246.641	K0+293.359	8.36		160	121.13	
4	K0+325	699.158	700		16.52	0.19	K0+308.480	K0+341.520	1.69		55	15.12	
5	K0+370	697.794		400	18.54	0.43	K0+351.460	K0+388.540		-3.03	45	9.94	
6	K0+415	700.602	400		15.98	0.32	K0+399.020	K0+430.980	6.24		45	10.48	
7	K0+460	699.815		400	20.57	0.53	K0+439.433	K0+480.567		-1.75	45	8.45	
8	K0+560	708.348	1000		19.87	0.20	K0+540.133	K0+579.867	8.53		100	59.57	
9	K0+755	717.240	300		15.41	0.40	K0+739.595	K0+770.405	4.56		195	159.73	
10	K0+800	714.671		300	14.15	0.33	K0+785.855	K0+814.145		-5.71	45	15.45	
11	K0+880	717.647	3000		15.00	0.04	K0+865	K0+895	3.72		80	50.86	
12	K0+960	719.823		300	16.92	0.48	K0+943.080	K0+976.920	2.72		80	48.08	
13	K1+015	727.523	600		18.13	0.27	K0+996.873	K1+033.127	14		55	19.95	
14	K1+100	734.286	700		23.01	0.38	K1+076.994	K1+123.006	7.96		85	43.87	
15	K1+270	736.640		400	25.23	0.80	K1+244.769	K1+295.231	1.38		170	121.76	
16	K1+360	749.240	400		21.52	0.58	K1+338.478	K1+381.522	14		90	43.25	
17	K1+480	753.127		400	19.42	0.47	K1+460.578	K1+499.422	3.24		120	79.06	
18	K1+770	790.682	300		20.22	0.68	K1+749.780	K1+790.220	12.95		290	250.36	
19	K1+910	789.940		400	28.74	1.03	K1+881.260	K1+938.740		-0.53	140	91.04	
20	K2+570	881.284	600		47.26	1.86	K2+522.743	K2+617.257	13.84		660	584.00	

编制：

复核：

纵 坡 、 竖 曲 线 表

S2-4

李江村枳头组油茶生产道路建设工程

序 号	桩 号	竖 曲 线							纵 坡（%）		变坡点间距	直坡段长	备 注
		标 高（m）	凸曲线半径R（m）	凹曲线半径R（m）	切线长T（m）	外距E（m）	起点桩号	终点桩号	+	-	（m）	（m）	
20	K2+570	881.284	600		47.26	1.86	K2+522.743	K2+617.257					
21	K2+705	878.703		800	31.65	0.63	K2+673.350	K2+736.650		-1.91	135	56.09	
22	K2+830	886.203		400	16.00	0.32	K2+814	K2+846	6		125	77.35	
23	K3+235	942.903	600		22.16	0.41	K3+212.839	K3+257.161	14		405	366.84	
24	K3+318	948.391		600	22.16	0.41	K3+295.839	K3+340.161	6.61		83	38.68	
25	K3+618	990.391	400		29.96	1.12	K3+588.040	K3+647.960	14		300	247.88	
26	K3+725	989.343		1000	26.65	0.36	K3+698.350	K3+751.650		-0.98	107	50.39	
27	K3+825	993.693	1200		22.66	0.21	K3+802.338	K3+847.662	4.35		100	50.69	
28	K3+954	994.432		400	26.85	0.90	K3+927.146	K3+980.854	0.57		129	79.48	
29	K4+210	1030.272	400		23.39	0.68	K4+186.611	K4+233.389	14		256	205.76	
30	K4+303	1032.416		400	18.13	0.41	K4+284.871	K4+321.129	2.31		93	51.48	
31	K4+382	1041.398		1200	15.78	0.10	K4+366.220	K4+397.780	11.37		79	45.09	
32	K4+508	1059.038	300		17.16	0.49	K4+490.844	K4+525.156	14		126	93.06	
33	K4+574	1060.729		500	18.17	0.33	K4+555.832	K4+592.168	2.56		66	30.68	
34	K4+880	1090.808	500		17.80	0.32	K4+862.201	K4+897.799	9.83		306	270.03	
35	K4+935	1092.298		500	15.34	0.24	K4+919.659	K4+950.341	2.71		55	21.86	
36	K5+120	1108.664		800	20.62	0.27	K5+099.385	K5+140.615	8.85		185	149.04	
37	K5+431	1152.204	300		15.45	0.40	K5+415.554	K5+446.446	14.00		311	274.94	
38	K5+484	1154.166		400	12.10	0.18	K5+471.905	K5+496.095	3.70		53	25.46	
39	K5+560	1161.576	500		17.09	0.29	K5+542.912	K5+577.089	9.75		76	46.82	
40	K5+630	1163.616		400	22.17	0.61	K5+607.829	K5+652.171	2.91		70	30.74	

编制：

复核：

纵 坡 、 竖 曲 线 表

S2-4

李江村枳头组油茶生产道路建设工程

序 号	桩 号	竖 曲 线							纵 坡（%）		变坡点间距	直坡段长	备 注
		标 高（m）	凸曲线半径R（m）	凹曲线半径R（m）	切线长T（m）	外距E（m）	起点桩号	终点桩号	+	-	（m）	（m）	
40	K5+630	1163.616		400	22.17	0.61	K5+607.829	K5+652.171					设计终点K6+000
									14		240	191.25	
41	K5+870	1197.216	500		26.57	0.71	K5+843.426	K5+896.574	3.37		240	188.33	
42	K6+110	1205.305	300		25.10	1.05	K6+084.905	K6+135.095		-13.36	55	9.70	

编制：

复核：

逐 桩 坐 标 表

S2-5

李江村枳头组油茶生产道路建设工程

第 1 页 共 7 页

桩 号	坐 标		桩 号	坐 标		桩 号	坐 标		桩 号	坐 标	
	N (X)	E (Y)		N (X)	E (Y)		N (X)	E (Y)		N (X)	E (Y)
K0+000	2863635.661	37427316.78	K0+153.738	2863563.819	37427417.77	K0+284.844	2863446.427	37427455.41	K0+540	2863213.6	37427441.33
K0+003.391	2863632.315	37427316.23	K0+160	2863557.57	37427418.17	K0+300	2863433.862	37427463.89	K0+559.659	2863203.722	37427424.33
K0+013.456	2863622.863	37427318.71	K0+164.553	2863553.026	37427418.46	K0+308.732	2863426.623	37427468.77	K0+560	2863203.551	37427424.03
K0+020	2863619.097	37427323.97	K0+171.305	2863546.427	37427419.79	K0+320	2863416.33	37427473.19	K0+572.126	2863197.983	37427413.27
K0+023.521	2863618.391	37427327.4	K0+178.057	2863540.421	37427422.83	K0+321.174	2863415.179	37427473.42	K0+580	2863194.916	37427406.02
K0+028.502	2863618.112	37427332.38	K0+180	2863538.821	37427423.93	K0+333.615	2863402.832	37427473.06	K0+584.593	2863193.331	37427401.71
K0+033.807	2863618.049	37427337.68	K0+187.927	2863532.295	37427428.43	K0+340	2863396.624	37427471.57	K0+600	2863188.27	37427387.15
K0+039.112	2863618.456	37427342.97	K0+193.528	2863527.414	37427431.16	K0+342.749	2863393.952	37427470.93	K0+620	2863181.701	37427368.26
K0+040	2863618.563	37427343.85	K0+199.128	2863522.112	37427432.94	K0+351.554	2863385.254	37427469.63	K0+640	2863175.132	37427349.37
K0+049.137	2863619.664	37427352.92	K0+200	2863521.264	37427433.14	K0+360	2863376.82	37427469.84	K0+643.051	2863174.13	37427346.49
K0+059.022	2863618.91	37427362.71	K0+213.084	2863508.525	37427436.12	K0+360.359	2863376.464	37427469.88	K0+651.172	2863169.164	37427340.26
K0+060	2863618.627	37427363.65	K0+218.711	2863502.939	37427436.62	K0+380	2863356.955	37427472.16	K0+659.294	2863161.39	37427338.52
K0+068.907	2863614.443	37427371.46	K0+220	2863501.655	37427436.52	K0+400	2863337.09	37427474.47	K0+660	2863160.689	37427338.6
K0+080	2863607.555	37427380.15	K0+224.337	2863497.434	37427435.55	K0+415.270	2863321.923	37427476.24	K0+666.522	2863154.212	37427339.36
K0+085.107	2863604.383	37427384.15	K0+225.108	2863496.706	37427435.3	K0+420	2863317.217	37427476.72	K0+673.738	2863147.049	37427338.91
K0+094.681	2863600.002	37427392.6	K0+236.023	2863486.033	37427433.18	K0+425.458	2863311.773	37427477.1	K0+680	2863141.305	37427336.48
K0+100	2863599.048	37427397.82	K0+240	2863482.058	37427433.15	K0+435.646	2863301.589	37427477.31	K0+680.953	2863140.508	37427335.96
K0+104.255	2863599.094	37427402.07	K0+246.938	2863475.184	37427434.02	K0+440	2863297.235	37427477.26	K0+700	2863124.832	37427325.14
K0+109.640	2863599.61	37427407.43	K0+257.830	2863464.538	37427436.33	K0+460	2863277.236	37427477.04	K0+718.913	2863109.267	37427314.4
K0+120	2863596.302	37427416.91	K0+260	2863462.471	37427436.97	K0+480	2863257.237	37427476.81	K0+720	2863108.346	37427313.82
K0+120.828	2863595.707	37427417.49	K0+262.702	2863460.113	37427438.28	K0+481.582	2863255.655	37427476.79	K0+726.322	2863102.307	37427312.19
K0+132.015	2863585.307	37427420.35	K0+267.573	2863456.821	37427441.83	K0+500	2863238	37427472.22	K0+733.730	2863095.308	37427314.26
K0+140	2863577.478	37427418.78	K0+276.208	2863452.34	37427449.21	K0+501.212	2863236.944	37427471.63	K0+740	2863091.152	37427318.87
K0+140.673	2863576.818	37427418.65	K0+280	2863450.078	37427452.24	K0+520	2863223.657	37427458.61	K0+743.622	2863089.958	37427322.28
K0+147.206	2863570.347	37427417.78	K0+280.526	2863449.72	37427452.63	K0+520.841	2863223.227	37427457.89	K0+753.513	2863091.921	37427331.71

编制：

复核：

逐 桩 坐 标 表

S2-5

李江村枳头组油茶生产道路建设工程

第 2 页 共 7 页

桩 号	坐 标		桩 号	坐 标		桩 号	坐 标		桩 号	坐 标	
	N (X)	E (Y)		N (X)	E (Y)		N (X)	E (Y)		N (X)	E (Y)
K0+760	2863095.595	37427337.05	K1+000	2863038.736	37427514.09	K1+220	2862842.95	37427435.99	K1+480	2862890.65	37427441.94
K0+780	2863106.923	37427353.54	K1+005.653	2863035.312	37427518.53	K1+240	2862826.19	37427425.08	K1+490.421	2862900.059	37427446.42
K0+786.924	2863110.844	37427359.24	K1+018.919	2863022.809	37427520.09	K1+250.020	2862817.793	37427419.61	K1+500	2862908.948	37427449.99
K0+800	2863116.905	37427370.79	K1+020	2863021.825	37427519.64	K1+260	2862808.442	37427416.43	K1+513.075	2862921.393	37427453.98
K0+805.849	2863118.695	37427376.36	K1+040	2863003.629	37427511.34	K1+261.467	2862806.976	37427416.37	K1+520	2862928.067	37427455.83
K0+820	2863120.516	37427390.35	K1+056.869	2862988.282	37427504.34	K1+272.914	2862796.129	37427419.51	K1+540	2862947.343	37427461.16
K0+824.774	2863120.312	37427395.12	K1+057.163	2862988.014	37427504.22	K1+280	2862790.154	37427423.32	K1+541.226	2862948.524	37427461.49
K0+840	2863119.003	37427410.29	K1+057.457	2862987.748	37427504.1	K1+300	2862773.288	37427434.07	K1+551.637	2862958.477	37427459.84
K0+845.169	2863118.559	37427415.44	K1+060	2862985.44	37427503.03	K1+301.639	2862771.906	37427434.95	K1+560	2862963.269	37427453.2
K0+857.041	2863114.188	37427426.29	K1+080	2862967.293	37427494.62	K1+311.124	2862762.806	37427435.91	K1+562.049	2862963.657	37427451.19
K0+860	2863112.165	37427428.45	K1+087.436	2862960.546	37427491.49	K1+320	2862756.754	37427429.8	K1+580	2862965.546	37427433.34
K0+868.912	2863104.496	37427432.84	K1+100	2862948.845	37427486.94	K1+320.609	2862756.563	37427429.22	K1+592.508	2862966.862	37427420.9
K0+880	2863093.896	37427436.09	K1+101.294	2862947.609	37427486.56	K1+327.851	2862757.022	37427422.14	K1+600	2862967.96	37427413.49
K0+900	2863074.774	37427441.96	K1+115.153	2862934.114	37427483.45	K1+335.094	2862761.965	37427417.05	K1+609.970	2862970.368	37427403.82
K0+920	2863055.653	37427447.82	K1+120	2862929.326	37427482.7	K1+340	2862766.39	37427414.93	K1+620	2862973.854	37427394.42
K0+932.730	2863043.483	37427451.55	K1+136.219	2862913.306	37427480.17	K1+360	2862784.428	37427406.29	K1+627.431	2862977.1	37427387.74
K0+939.434	2863037.936	37427455.16	K1+140	2862909.597	37427479.44	K1+373.328	2862796.449	37427400.54	K1+640	2862983.053	37427376.67
K0+940	2863037.576	37427455.6	K1+148.552	2862901.483	37427476.77	K1+380	2862802.736	37427398.35	K1+642.212	2862984.101	37427374.72
K0+946.138	2863035.146	37427461.16	K1+160	2862891.558	37427471.11	K1+388.324	2862811.003	37427397.64	K1+660	2862989.592	37427357.9
K0+955.293	2863033.725	37427470.21	K1+160.885	2862890.848	37427470.58	K1+400	2862822.251	37427400.48	K1+670.117	2862989.961	37427347.81
K0+960	2863033.361	37427474.89	K1+180	2862875.632	37427459.01	K1+403.319	2862825.166	37427402.07	K1+680	2862988.355	37427338.07
K0+960.815	2863033.373	37427475.71	K1+197.666	2862861.568	37427448.32	K1+420	2862839.36	37427410.83	K1+698.022	2862980.679	37427321.87
K0+966.337	2863034.034	37427481.18	K1+200	2862859.685	37427446.94	K1+440	2862856.378	37427421.34	K1+700	2862979.526	37427320.27
K0+980	2863036.911	37427494.54	K1+200.034	2862859.658	37427446.92	K1+460	2862873.396	37427431.84	K1+720	2862967.86	37427304.02
K0+992.387	2863039.52	37427506.65	K1+202.402	2862857.697	37427445.6	K1+467.767	2862880.006	37427435.92	K1+740	2862956.195	37427287.77

编制：

复核：

逐 桩 坐 标 表

S2-5

李江村枳头组油茶生产道路建设工程

第 3 页 共 7 页

桩 号	坐 标		桩 号	坐 标		桩 号	坐 标		桩 号	坐 标	
	N (X)	E (Y)		N (X)	E (Y)		N (X)	E (Y)		N (X)	E (Y)
K1+760	2862944. 53	37427271. 53	K2+025. 427	2863065. 638	37427103. 25	K2+285. 456	2863237. 392	37427164. 03	K2+608. 687	2863514. 967	37427081. 31
K1+780	2862932. 864	37427255. 28	K2+040	2863079. 891	37427100. 21	K2+300	2863251. 706	37427166. 61	K2+620	2863513. 966	37427070. 04
K1+800	2862921. 199	37427239. 04	K2+047. 978	2863087. 695	37427098. 55	K2+320	2863271. 389	37427170. 15	K2+639. 678	2863512. 225	37427050. 44
K1+805. 305	2862918. 104	37427234. 73	K2+056. 176	2863095. 381	37427095. 77	K2+340	2863291. 073	37427173. 7	K2+640	2863512. 2	37427050. 12
K1+818. 750	2862915. 846	37427221. 93	K2+060	2863098. 644	37427093. 79	K2+360	2863310. 756	37427177. 24	K2+649. 385	2863514. 446	37427041. 17
K1+820	2862916. 234	37427220. 74	K2+064. 374	2863102. 032	37427091. 03	K2+380	2863330. 439	37427180. 79	K2+659. 093	2863521. 812	37427035. 1
K1+832. 195	2862924. 434	37427212. 17	K2+080	2863113. 396	37427080. 3	K2+400	2863350. 123	37427184. 33	K2+660	2863522. 659	37427034. 78
K1+840	2862931. 621	37427209. 12	K2+100	2863127. 94	37427066. 57	K2+416. 175	2863366. 041	37427187. 2	K2+670. 473	2863532. 442	37427031. 04
K1+860	2862950. 035	37427201. 32	K2+120	2863142. 485	37427052. 84	K2+420	2863369. 839	37427187. 63	K2+680	2863540. 965	37427026. 82
K1+865. 599	2862955. 19	37427199. 13	K2+121. 121	2863143. 3	37427052. 08	K2+430. 393	2863380. 102	37427186. 37	K2+687. 908	2863547. 326	37427022. 13
K1+880	2862968. 698	37427194. 16	K2+134. 321	2863155. 578	37427049. 5	K2+440	2863388. 692	37427182. 16	K2+700	2863555. 425	37427013. 19
K1+881. 017	2862969. 669	37427193. 85	K2+140	2863160. 284	37427052. 59	K2+444. 612	2863392. 236	37427179. 22	K2+705. 342	2863558. 27	37427008. 67
K1+896. 434	2862984. 612	37427190. 09	K2+147. 522	2863163. 44	37427059. 28	K2+460	2863403. 287	37427168. 51	K2+720	2863565. 405	37426995. 87
K1+900	2862988. 111	37427189. 4	K2+160	2863165. 023	37427071. 66	K2+480	2863417. 649	37427154. 59	K2+730. 306	2863570. 421	37426986. 87
K1+912. 844	2863000. 711	37427186. 9	K2+180	2863167. 561	37427091. 5	K2+500	2863432. 012	37427140. 67	K2+740	2863577. 881	37426981. 1
K1+920	2863007. 569	37427184. 9	K2+185. 919	2863168. 312	37427097. 37	K2+520	2863446. 374	37427126. 75	K2+743. 122	2863580. 971	37426980. 71
K1+933. 852	2863019. 338	37427177. 72	K2+199. 963	2863172. 478	37427110. 7	K2+523. 194	2863448. 668	37427124. 53	K2+755. 939	2863591. 451	37426986. 99
K1+940	2863023. 628	37427173. 33	K2+200	2863172. 495	37427110. 74	K2+537. 761	2863460. 341	37427115. 89	K2+760	2863593. 388	37426990. 56
K1+954. 861	2863030. 852	37427160. 44	K2+214. 006	2863180. 975	37427121. 79	K2+540	2863462. 322	37427114. 84	K2+780	2863602. 926	37427008. 13
K1+960	2863032. 493	37427155. 57	K2+220	2863185. 396	37427125. 84	K2+552. 327	2863473. 869	37427110. 6	K2+800	2863612. 465	37427025. 71
K1+980	2863038. 88	37427136. 62	K2+240	2863200. 147	37427139. 35	K2+560	2863481. 322	37427108. 78	K2+802. 306	2863613. 565	37427027. 74
K1+994. 354	2863043. 464	37427123. 01	K2+260	2863214. 897	37427152. 85	K2+577. 461	2863498. 283	37427104. 63	K2+820	2863624. 158	37427041. 83
K2+000	2863045. 758	37427117. 86	K2+260. 111	2863214. 979	37427152. 93	K2+580	2863500. 708	37427103. 88	K2+820. 891	2863624. 797	37427042. 45
K2+009. 890	2863051. 933	37427110. 2	K2+272. 784	2863225. 399	37427160. 07	K2+593. 074	2863510. 944	37427096. 06	K2+839. 475	2863639. 979	37427053. 04
K2+020	2863060. 462	37427104. 86	K2+280	2863232. 095	37427162. 74	K2+600	2863514. 029	37427089. 89	K2+840	2863640. 45	37427053. 27

编制：

复核：

逐 桩 坐 标 表

S2-5

李江村枳头组油茶生产道路建设工程

第 4 页 共 7 页

桩 号	坐 标		桩 号	坐 标		桩 号	坐 标		桩 号	坐 标	
	N (X)	E (Y)		N (X)	E (Y)		N (X)	E (Y)		N (X)	E (Y)
K2+857.821	2863656.465	37427061.09	K3+103.395	2863807.536	37426897.86	K3+260	2863926.328	37426861.09	K3+440	2864062.349	37426872.66
K2+860	2863658.471	37427061.94	K3+111.139	2863808.354	37426890.17	K3+280	2863944.59	37426852.93	K3+440.348	2864062.093	37426872.42
K2+869.551	2863667.878	37427062.94	K3+118.884	2863810.636	37426882.78	K3+300	2863962.852	37426844.78	K3+460	2864047.454	37426859.31
K2+880	2863677.419	37427058.98	K3+120	2863811.067	37426881.75	K3+304.680	2863967.126	37426842.87	K3+467.843	2864041.612	37426854.08
K2+881.281	2863678.409	37427058.17	K3+124.284	2863812.721	37426877.8	K3+313.319	2863975.52	37426841.13	K3+473.698	2864038.113	37426849.43
K2+900	2863692.497	37427045.84	K3+134.376	2863817.896	37426869.18	K3+320	2863982.064	37426842.32	K3+479.553	2864036.646	37426843.8
K2+920	2863707.549	37427032.67	K3+140	2863821.787	37426865.12	K3+321.958	2863983.87	37426843.07	K3+480	2864036.62	37426843.35
K2+940	2863722.6	37427019.5	K3+144.467	2863825.31	37426862.38	K3+329.246	2863990.452	37426846.2	K3+497.498	2864035.576	37426825.88
K2+940.434	2863722.927	37427019.22	K3+160	2863838.149	37426853.64	K3+335.014	2863995.234	37426849.39	K3+500	2864035.323	37426823.4
K2+948.643	2863729.407	37427014.19	K3+165.232	2863842.475	37426850.69	K3+340	2863998.49	37426853.15	K3+504.838	2864034.25	37426818.68
K2+956.852	2863736.432	37427009.95	K3+170.786	2863847.613	37426848.72	K3+340.782	2863998.912	37426853.81	K3+512.178	2864031.22	37426812.02
K2+960	2863739.218	37427008.48	K3+176.339	2863853.092	37426849.25	K3+350.003	2864003.732	37426861.67	K3+520	2864027.138	37426805.35
K2+980	2863756.918	37426999.17	K3+180	2863856.558	37426850.43	K3+356.632	2864008.062	37426866.65	K3+540	2864016.701	37426788.29
K2+981.021	2863757.822	37426998.69	K3+194.159	2863869.963	37426854.99	K3+360	2864010.829	37426868.56	K3+547.827	2864012.616	37426781.61
K2+994.451	2863769.252	37426991.66	K3+199.399	2863875.13	37426855.56	K3+363.261	2864013.778	37426869.95	K3+557.359	2864005.086	37426776.18
K3+000	2863773.682	37426988.32	K3+200	2863875.725	37426855.48	K3+375.223	2864024.982	37426874.13	K3+560	2864002.468	37426775.87
K3+007.881	2863779.639	37426983.17	K3+204.640	2863880.053	37426853.89	K3+380	2864029.346	37426876.07	K3+566.891	2863995.936	37426777.75
K3+020	2863788.482	37426974.88	K3+211.073	2863885.552	37426850.55	K3+385.020	2864033.649	37426878.65	K3+580	2863984.877	37426784.79
K3+030.380	2863796.057	37426967.78	K3+220	2863894.144	37426849.04	K3+394.817	2864040.963	37426885.13	K3+586.689	2863979.234	37426788.38
K3+040	2863802.091	37426960.33	K3+221.126	2863895.236	37426849.32	K3+400	2864044.393	37426889.02	K3+592.362	2863974.249	37426791.08
K3+044.533	2863804.176	37426956.31	K3+231.179	2863902.632	37426855.69	K3+400.694	2864044.852	37426889.54	K3+598.035	2863968.933	37426793.04
K3+058.686	2863807.125	37426942.56	K3+234.023	2863903.845	37426858.26	K3+411.899	2864054.865	37426893.62	K3+600	2863967.046	37426793.59
K3+060	2863807.137	37426941.25	K3+240	2863907.61	37426862.82	K3+420	2864062.17	37426890.48	K3+610.426	2863957.036	37426796.51
K3+080	2863807.321	37426921.25	K3+243.322	2863910.527	37426864.39	K3+423.104	2864064.174	37426888.12	K3+616.405	2863951.151	37426797.48
K3+100	2863807.505	37426901.25	K3+252.622	2863919.591	37426864.09	K3+431.726	2864066.037	37426879.89	K3+620	2863947.56	37426797.38

编制：

复核：

逐 桩 坐 标 表

S2-5

李江村枳头组油茶生产道路建设工程

第 5 页 共 7 页

桩 号	坐 标		桩 号	坐 标		桩 号	坐 标		桩 号	坐 标	
	N (X)	E (Y)		N (X)	E (Y)		N (X)	E (Y)		N (X)	E (Y)
K3+622.383	2863945.204	37426797.03	K3+816.445	2863784.04	37426749.66	K4+060	2863660.983	37426790.41	K4+270.914	2863769.91	37426679.7
K3+636.765	2863931.095	37426794.24	K3+820	2863782.325	37426752.77	K4+065.876	2863657.962	37426785.38	K4+280	2863777.5	37426674.75
K3+640	2863927.961	37426793.45	K3+825.623	2863778.274	37426756.62	K4+075.364	2863652.413	37426777.68	K4+281.481	2863778.848	37426674.14
K3+641.641	2863926.409	37426792.91	K3+834.800	2863769.559	37426759	K4+080	2863650.003	37426773.73	K4+292.060	2863788.568	37426669.96
K3+646.517	2863922	37426790.84	K3+840	2863764.363	37426758.8	K4+082.138	2863649.103	37426771.79	K4+297.323	2863793.646	37426668.66
K3+653.671	2863915.791	37426787.29	K3+860	2863744.378	37426758.01	K4+088.912	2863647.196	37426765.3	K4+300	2863796.32	37426668.61
K3+660	2863909.962	37426784.87	K3+880	2863724.394	37426757.23	K4+100	2863645.286	37426754.38	K4+302.586	2863798.879	37426668.97
K3+660.198	2863909.77	37426784.82	K3+900	2863704.409	37426756.45	K4+104.165	2863644.569	37426750.28	K4+307.904	2863804.077	37426670.09
K3+666.724	2863903.316	37426783.98	K3+905.745	2863698.668	37426756.23	K4+112.170	2863644.465	37426742.31	K4+316.591	2863812.695	37426670.06
K3+680	2863890.041	37426784.01	K3+917.064	2863688.553	37426760.46	K4+120	2863646.797	37426734.87	K4+320	2863815.942	37426669.04
K3+690.512	2863879.529	37426784.03	K3+920	2863686.836	37426762.83	K4+120.174	2863646.875	37426734.71	K4+325.278	2863820.5	37426666.41
K3+700	2863870.206	37426782.51	K3+928.384	2863685.272	37426770.92	K4+140	2863655.805	37426717.01	K4+340	2863832.174	37426657.44
K3+705.658	2863865.054	37426780.2	K3+940	2863686.796	37426782.44	K4+144.782	2863657.959	37426712.74	K4+341.595	2863833.438	37426656.46
K3+720	2863854.838	37426770.34	K3+960	2863689.419	37426802.26	K4+153.248	2863663.65	37426706.63	K4+350.232	2863841.525	37426654
K3+720.805	2863854.422	37426769.65	K3+980	2863692.042	37426822.09	K4+160	2863670.018	37426704.56	K4+358.868	2863849.226	37426657.49
K3+740	2863844.748	37426753.07	K3+983.213	2863692.463	37426825.28	K4+161.713	2863671.729	37426704.5	K4+360	2863850.027	37426658.28
K3+747.057	2863841.19	37426746.98	K3+991.454	2863690.777	37426833.18	K4+180	2863690.01	37426704.96	K4+369.143	2863856.499	37426664.74
K3+760	2863832.125	37426737.94	K3+999.694	2863684.48	37426838.24	K4+200	2863710.004	37426705.47	K4+376.820	2863861.185	37426670.8
K3+760.488	2863831.7	37426737.7	K4+000	2863684.19	37426838.34	K4+220	2863729.997	37426705.97	K4+380	2863862.646	37426673.62
K3+773.919	2863818.8	37426734.59	K4+010.249	2863674.312	37426837.2	K4+224.124	2863734.12	37426706.08	K4+384.497	2863864.185	37426677.84
K3+780	2863812.722	37426734.78	K4+020	2863668.747	37426829.52	K4+239.645	2863749.052	37426702.52	K4+400	2863868.39	37426692.76
K3+795.142	2863797.588	37426735.27	K4+020.805	2863668.595	37426828.73	K4+240	2863749.364	37426702.35	K4+411.252	2863871.443	37426703.59
K3+800	2863792.895	37426736.39	K4+040	2863665.617	37426809.77	K4+255.167	2863760.274	37426692.05	K4+420	2863876.816	37426710.19
K3+802.058	2863791.114	37426737.41	K4+049.466	2863664.148	37426800.42	K4+260	2863762.846	37426687.96	K4+420.403	2863877.177	37426710.36
K3+808.973	2863786.855	37426742.74	K4+057.671	2863661.94	37426792.53	K4+260.346	2863763.031	37426687.67	K4+429.554	2863886.051	37426710.47

编制：

复核：

逐 桩 坐 标 表

S2-5

李江村枳头组油茶生产道路建设工程

第 6 页 共 7 页

桩 号	坐 标		桩 号	坐 标		桩 号	坐 标		桩 号	坐 标	
	N (X)	E (Y)		N (X)	E (Y)		N (X)	E (Y)		N (X)	E (Y)
K4+438.171	2863891.78	37426704.35	K4+620.404	2863775.278	37426614.72	K4+840.547	2863574.545	37426628.15	K5+059.424	2863392.168	37426527.44
K4+440	2863892.256	37426702.59	K4+630.890	2863767.178	37426620.85	K4+855.713	2863559.475	37426629.02	K5+060	2863391.977	37426526.9
K4+446.787	2863891.329	37426695.98	K4+640	2863762.921	37426628.9	K4+860	2863555.244	37426628.34	K5+072.266	2863385.788	37426516.39
K4+460	2863885.502	37426684.12	K4+644.294	2863760.915	37426632.7	K4+870.879	2863544.968	37426624.84	K5+080	2863380.067	37426511.21
K4+480	2863876.681	37426666.17	K4+660	2863750.353	37426644.08	K4+880	2863536.75	37426620.89	K5+085.109	2863375.692	37426508.58
K4+500	2863867.861	37426648.22	K4+662.375	2863748.295	37426645.26	K4+891.492	2863526.394	37426615.91	K5+097.561	2863364.554	37426503.02
K4+506.073	2863865.182	37426642.77	K4+680	2863731.228	37426648.51	K4+900	2863518.836	37426612	K5+100	2863362.277	37426502.15
K4+514.667	2863860.929	37426635.31	K4+680.457	2863730.774	37426648.46	K4+900.079	2863518.767	37426611.96	K5+104.100	2863358.213	37426501.79
K4+520	2863857.841	37426630.96	K4+700	2863711.374	37426646.1	K4+908.665	2863511.379	37426607.59	K5+110.640	2863352.154	37426504.03
K4+523.261	2863855.793	37426628.42	K4+702.009	2863709.38	37426645.86	K4+920	2863501.793	37426601.54	K5+120	2863344.57	37426509.51
K4+531.274	2863850.617	37426622.31	K4+713.731	2863697.831	37426643.88	K4+920.812	2863501.106	37426601.11	K5+126.680	2863339.158	37426513.43
K4+540	2863843.147	37426618.18	K4+720	2863691.749	37426642.36	K4+931.645	2863491.62	37426595.89	K5+135.309	2863330.98	37426515.4
K4+541.779	2863841.374	37426618.06	K4+725.452	2863686.53	37426640.79	K4+940	2863483.915	37426592.67	K5+140	2863326.634	37426513.73
K4+552.284	2863832.19	37426622.43	K4+740	2863672.704	37426636.26	K4+942.477	2863481.576	37426591.85	K5+143.938	2863323.787	37426511.04
K4+560	2863827.288	37426628.39	K4+749.945	2863663.252	37426633.17	K4+960	2863464.955	37426586.3	K5+152.158	2863321.694	37426503.28
K4+562.930	2863825.426	37426630.65	K4+759.605	2863653.986	37426630.44	K4+980	2863445.984	37426579.97	K5+160	2863325.125	37426496.41
K4+570.390	2863819.252	37426634.62	K4+760	2863653.604	37426630.34	K4+995.394	2863431.383	37426575.1	K5+160.378	2863325.405	37426496.16
K4+577.849	2863811.922	37426634.26	K4+769.264	2863644.574	37426628.28	K5+000	2863427.096	37426573.42	K5+180	2863340.174	37426483.24
K4+580	2863809.909	37426633.5	K4+780	2863634.042	37426626.2	K5+008.586	2863419.656	37426569.16	K5+199.665	2863354.976	37426470.29
K4+582.909	2863807.188	37426632.47	K4+797.206	2863617.164	37426622.85	K5+020	2863411.267	37426561.46	K5+200	2863355.231	37426470.08
K4+587.443	2863803.083	37426630.56	K4+800	2863614.409	37426622.39	K5+021.779	2863410.146	37426560.08	K5+207.262	2863361.795	37426467.2
K4+591.977	2863799.312	37426628.04	K4+807.733	2863606.699	37426621.91	K5+033.987	2863402.639	37426550.45	K5+214.859	2863369.191	37426468.37
K4+600	2863792.99	37426623.11	K4+818.260	2863596.268	37426623.17	K5+040	2863399.269	37426545.48	K5+220	2863373.82	37426470.61
K4+609.917	2863785.175	37426617	K4+820	2863594.572	37426623.56	K5+041.486	2863398.541	37426544.18	K5+240	2863391.828	37426479.31
K4+620	2863775.674	37426614.64	K4+840	2863575.078	37426628.03	K5+048.985	2863395.54	37426537.32	K5+246.029	2863397.256	37426481.94

编制：

复核：

逐 桩 坐 标 表

S2-5

李江村枳头组油茶生产道路建设工程

第 7 页 共 7 页

桩 号	坐 标		桩 号	坐 标		桩 号	坐 标		桩 号	坐 标	
	N (X)	E (Y)		N (X)	E (Y)		N (X)	E (Y)		N (X)	E (Y)
K5+253.263	2863404.131	37426484.1	K5+428.468	2863564.842	37426529.1	K5+641.975	2863768.409	37426509.75	K5+819.432	2863927.161	37426452.8
K5+260	2863410.846	37426484.28	K5+440	2863576.359	37426528.5	K5+648.969	2863775.353	37426509.13	K5+820	2863927.608	37426452.45
K5+260.498	2863411.34	37426484.22	K5+460	2863596.332	37426527.46	K5+660	2863786.37	37426509.69	K5+830.756	2863932.936	37426443.38
K5+264.661	2863415.469	37426483.69	K5+477.530	2863613.839	37426526.55	K5+668.282	2863794.641	37426510.1	K5+840	2863931.703	37426434.36
K5+272.550	2863423.062	37426485.23	K5+480	2863616.307	37426526.55	K5+674.055	2863800.256	37426509.02	K5+842.079	2863930.683	37426432.55
K5+280	2863427.959	37426490.68	K5+484.503	2863620.762	37426527.16	K5+679.828	2863804.734	37426505.47	K5+847.297	2863927.386	37426428.52
K5+280.438	2863428.131	37426491.08	K5+491.476	2863627.251	37426529.65	K5+680	2863804.839	37426505.33	K5+852.515	2863923.337	37426425.24
K5+286.398	2863430.367	37426496.61	K5+500	2863634.708	37426533.78	K5+685.466	2863808.186	37426501.01	K5+860	2863917.065	37426421.16
K5+295.220	2863435.347	37426503.8	K5+508.010	2863641.715	37426537.66	K5+695.820	2863816.321	37426494.79	K5+880	2863900.309	37426410.24
K5+300	2863439.212	37426506.6	K5+520	2863652.797	37426542.16	K5+700	2863820.319	37426493.6	K5+894.999	2863887.743	37426402.05
K5+304.043	2863442.922	37426508.19	K5+531.055	2863663.697	37426543.87	K5+706.175	2863826.467	37426493.42	K5+900	2863883.654	37426399.17
K5+320	2863458.148	37426512.96	K5+540	2863672.621	37426543.47	K5+720	2863840.186	37426495.12	K5+903.803	2863880.688	37426396.79
K5+324.625	2863462.561	37426514.34	K5+554.100	2863686.146	37426539.66	K5+728.148	2863848.271	37426496.13	K5+912.608	2863874.348	37426390.69
K5+330.858	2863468.609	37426515.83	K5+560	2863691.543	37426537.27	K5+733.180	2863853.249	37426495.7	K5+920	2863869.355	37426385.24
K5+337.092	2863474.796	37426516.56	K5+577.923	2863707.937	37426530.03	K5+738.211	2863857.619	37426493.29	K5+937.402	2863857.599	37426372.41
K5+340	2863477.7	37426516.72	K5+580	2863709.848	37426529.21	K5+740	2863858.97	37426492.11	K5+940	2863855.748	37426370.59
K5+360	2863497.671	37426517.81	K5+585.041	2863714.567	37426527.44	K5+750.520	2863866.916	37426485.22	K5+951.677	2863845.547	37426365.12
K5+371.683	2863509.337	37426518.45	K5+592.158	2863721.4	37426525.46	K5+760	2863874.535	37426479.59	K5+960	2863837.297	37426364.37
K5+380	2863517.613	37426519.24	K5+600	2863729.021	37426523.61	K5+761.110	2863875.483	37426479.02	K5+965.952	2863831.471	37426365.51
K5+383.446	2863521.017	37426519.78	K5+614.677	2863743.284	37426520.15	K5+771.700	2863885.006	37426474.42	K5+980	2863818.104	37426369.83
K5+395.209	2863532.461	37426522.47	K5+620	2863748.394	37426518.67	K5+780	2863892.769	37426471.48	K5+981.298	2863816.869	37426370.23
K5+400	2863537.052	37426523.84	K5+622.805	2863751.029	37426517.71	K5+793.407	2863905.307	37426466.73	K5+988.102	2863810.274	37426371.88
K5+411.376	2863547.954	37426527.09	K5+630.933	2863758.373	37426514.24	K5+800	2863911.303	37426464	K5+994.905	2863803.515	37426372.62
K5+419.922	2863556.312	37426528.82	K5+634.980	2863761.907	37426512.26	K5+800.455	2863911.702	37426463.78	K6+000	2863798.425	37426372.83
K5+420	2863556.389	37426528.83	K5+640	2863766.506	37426510.27	K5+807.503	2863917.619	37426459.96			

编制：

复核：